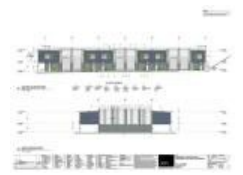


**24/10-12 Sylvester Ave, Unanderra, NSW 2526**

**\$453,750.00 + GST**

Warehouse



## BRAND NEW INDUSTRIAL UNIT PARK

- Modern tilt up design
- Mezzinines available
- Various sizes from 96sqm to 280sqm
- Two street access
- High roof & door clearance
- Large vehicle friendly

**Open for Inspection**

By Appointment.

### Listed By



Harry Stefanou  
Phone: (02) 4229 6640  
Mobile: 0413 737 585



James Egan  
Phone: (02) 4229 6640  
Mobile: 0451 822 238

