

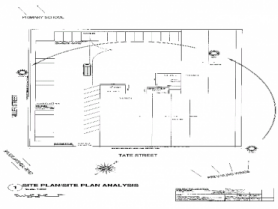


Lot 120 Tate Street Coniston NSW

- :: Over 4000sqm of land on corner site
- :: Two street Frontage
- :: Excellent vehicle access
- :: Centre of wollongongs industrial/business precinct

Warehouse centrally located in Wollongong's Industrial Precinct. This 1,765sqm older style warehouse position between 2 streets, must sell vacant possession. Land size is 4,060sqm. Ready to be redeveloped, leased or occupied as is. Position and size rarely seen in this area. Zoned Light Industrial, loads of uses. Great opportunity for transport facility or manufacturing. Call today for more details.

- Type** : Offices
- Building Size** : 1940 sqm
- Land Size** : 4040 sqm
- View** : <https://www.whkcommercial.com.au/sale/nsw/wollongong-illawarra/coniston/commercial/offices/8045655>



SITE PLAN ANALYSIS

DATE	10/10/2010
PROJECT	1000 BROADWAY
CLIENT	ABC COMPANY
SCALE	1" = 10'
DRAWN BY	J. SMITH
CHECKED BY	M. JONES