

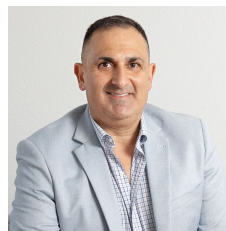


24/10-12 Sylvester Ave Unanderra NSW

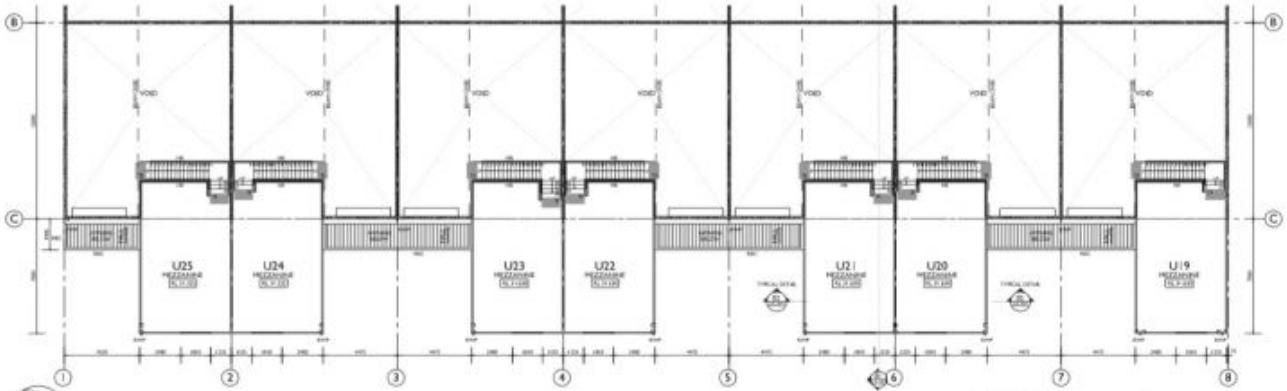
2 🚗

- Modern tilt up design includes Mezzanine/Open Office Space
- Two street access with large vehicle friendly driveways
- High Ceiling, Plus High Electric Roller Door clearance
- 2 Undercover parking per unit + visitor parking
- Warehouse 116sqm, Mezzanine 49sqm Total 165sqm

Type : Industrial
Price : \$ 447,500
Building Size : 165 sqm
Land Size : 165 sqm
View : <https://www.whkcommercial.com.au/sale/nsw/wollongong-illawarra/unanderra/commercial/industrial/8045754>



Harry Stefanou

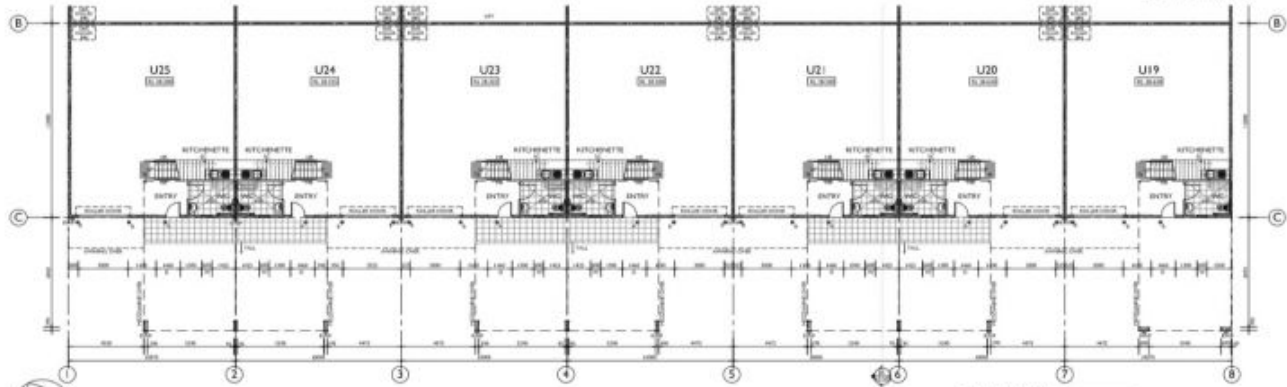


01 FIRST FLOOR PLAN - BLOCK 2

SCALE 1:100 @ A1

GENERAL LEGEND

- STRUCTURAL LINE
- MECHANICAL, ELECTRICAL AND PLUMBING (MEP) EQUIPMENT
- MECHANICAL, ELECTRICAL AND PLUMBING (MEP) EQUIPMENT
- MECHANICAL, ELECTRICAL AND PLUMBING (MEP) EQUIPMENT



01 GROUND FLOOR PLAN - BLOCK 2

SCALE 1:100 @ A1

GENERAL LEGEND

- STRUCTURAL LINE
- MECHANICAL, ELECTRICAL AND PLUMBING (MEP) EQUIPMENT
- MECHANICAL, ELECTRICAL AND PLUMBING (MEP) EQUIPMENT
- MECHANICAL, ELECTRICAL AND PLUMBING (MEP) EQUIPMENT