



1/3 Pioneer Drive Woonona NSW

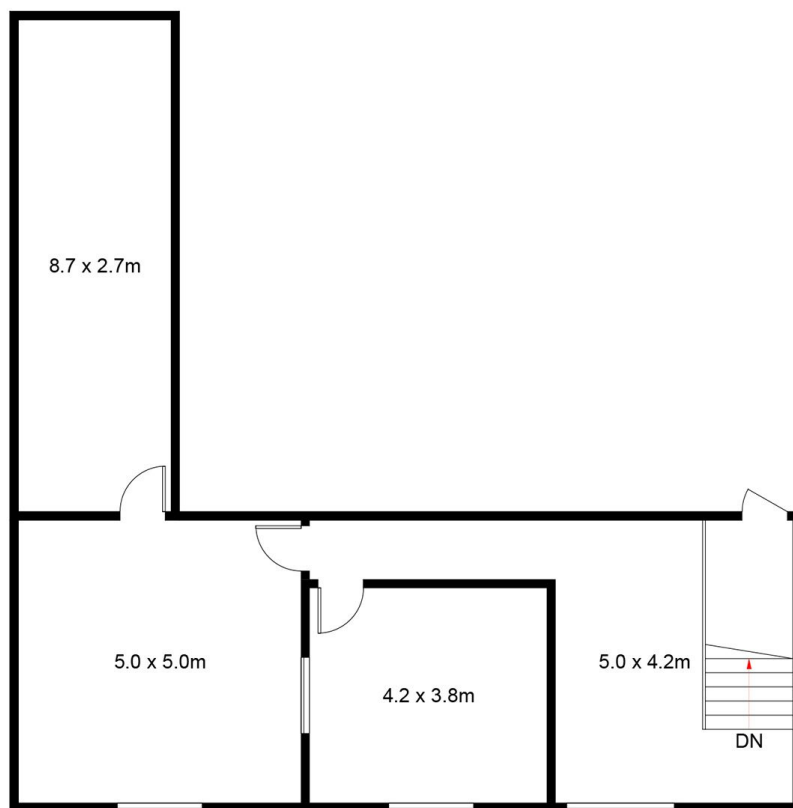
5 🚗

- * Unit 1 of a boutique 3 unit strata complex in Northern Suburbs of The Illawarra
- * Total lettable area over 392m²
- * High Clearance Concrete Panel Warehouse with over 8m clearance
- * Includes 5 x onsite parking spaces
- * Secure electric gated complex
- * Multiple Offices, boardroom, kitchen and amenities
- * Unit 2 and 3 - adjoining- also available for Sale

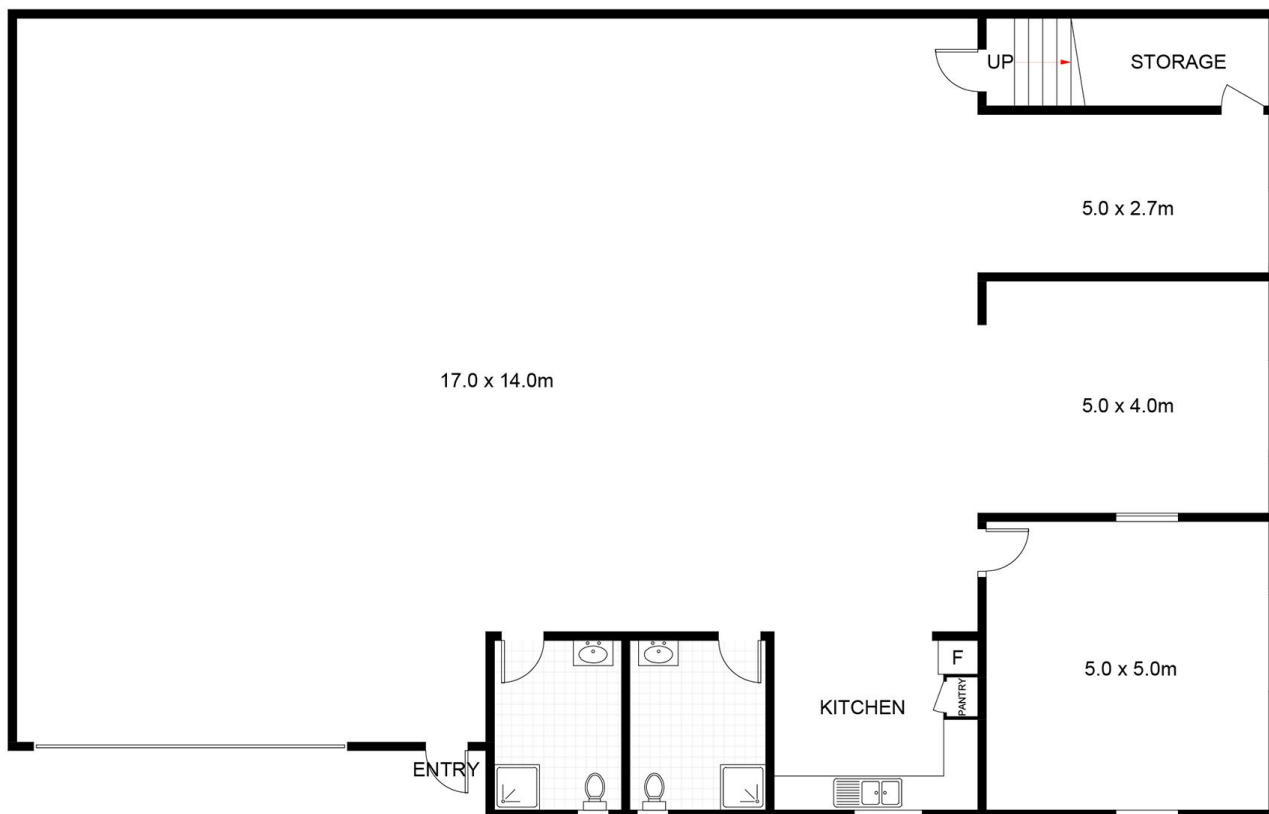
Type : Industrial
Building Size : 392.5 sqm
Land Size : 500 sqm
View : <https://www.whkcommercial.com.au/sale/nsw/wollongong-illawarra/woonona/commercial/industrial/8045826>



Tony Moschella
02 4229 6640



UPPER FLOOR



LOWER FLOOR



1/3 Pioneer Road, Woonona

Approximate Gross Internal Area = 392.5 sq m

Scale in metres. Indicative only. Dimensions are approximate. All information contained herein is gathered from sources

we believe to be reliable. However, we cannot guarantee its accuracy and interested persons should rely on their own enquiries. Some images may contain digital furniture.