



10/2 Indigo Loop Yallah NSW



* 251sqm Industrial Unit - 187 sqm Warehouse with 64 sqm mezz/office

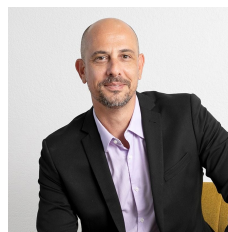
* Includes 2 undercover car spaces

* Loads of visitor parking as well as excellent truck access and maneuverability

* Ideal location just minutes from Yallah Interchange and Albion Park Rail Bypass

* Ready to owner occupy or invest

Type : Industrial
Price : \$1,069,500 + GST
Building Size : 251 sqm
View : <https://www.whkcommercial.com.au/sale/nsw/wollongong-illawarra/yallah/commercial/industrial/8045851>



Mark Marinelli
02 4229 6640



Elena Koroleva
02 4229 6640

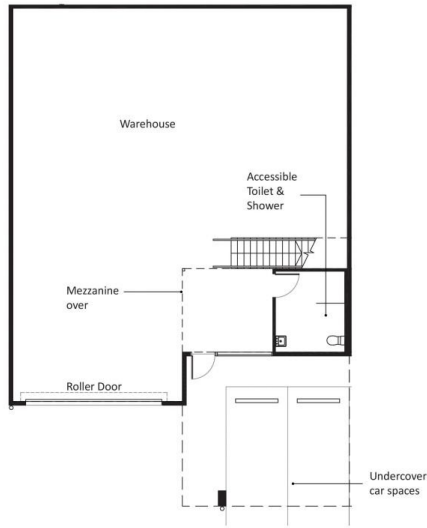
TYPICAL FLOOR PLANS

1:150@A3

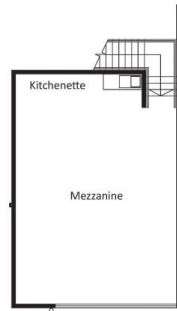
SIMILAR UNIT #: 02, 03, 07, 08, 09, 10, 11, 12, 13, 15, 16, 17, 18, 19, 20, 21, 22, 23, 24,26, 27, 28, 29, 30, 31

GRAEVELIA
CENTRAL

Graevella Estate - 105 Yallah Road, Yallah, NSW



Ground Floor



Mezzanine



Please note the Architectural Plans were produced prior to completion of construction and is illustrative only. Changes may be made during construction. Dimensions, tile layouts, finishes and specifications are subject to change without notice in accordance with the provisions of the Contract of Sale.