

### 6/3 Luso Drive Unanderra NSW

5 

Boasting a very rare size in the current market, this industrial unit features a total floor area of 524 sqm approx. Fully alarmed and secure, this industrial unit is located at the rear in a block of only six with high clearance automatic roller door access and 5 car parking spaces on title out front.

This unit also has high clearance auto roller door at the rear giving drive through access to an exclusive rear courtyard area of 108sqm registered on title.

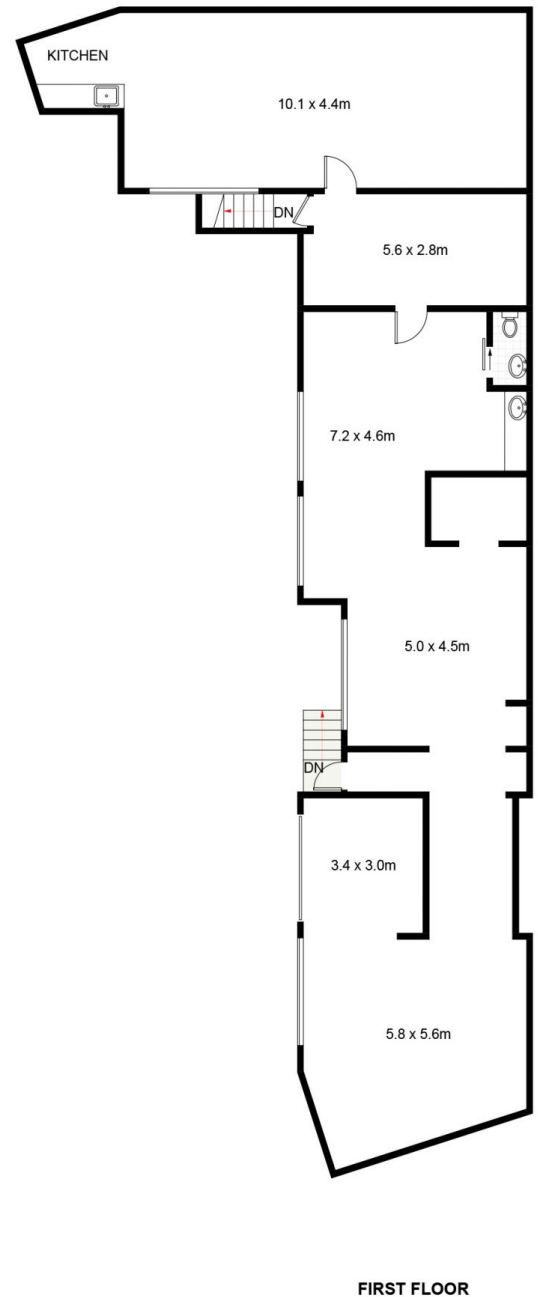
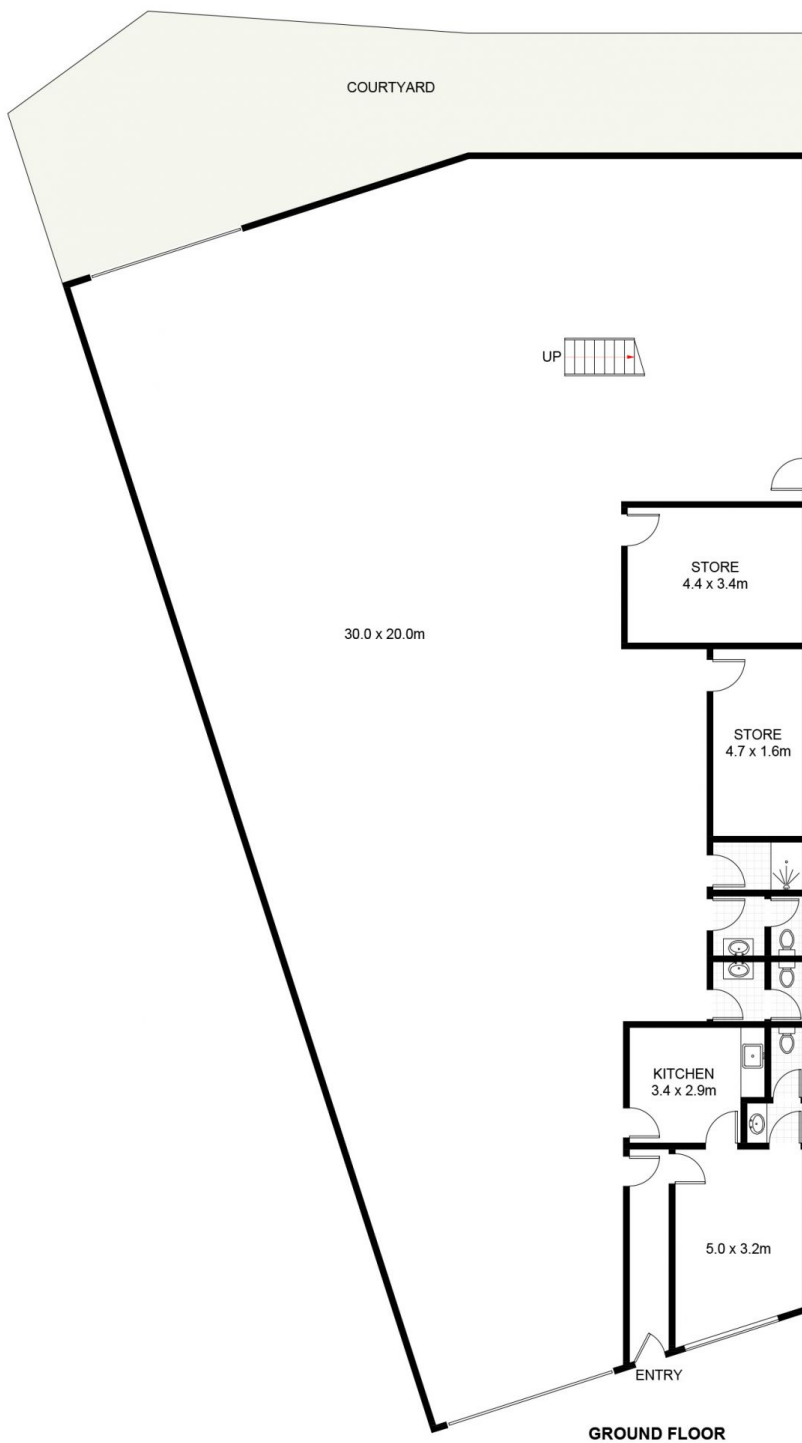
Ground level warehouse comes with a glass front reception area and multiple bathrooms, shower and storerooms.

Upstairs boasts fully fitted out air-conditioned offices including kitchen areas a separate bathroom and a boardroom.

**Type** : Industrial

**View** : <https://www.whkcommercial.com.au/sale/nsw/wollongong-illawarra/unanderra/commercial/industrial/8045876>

[For full version visit the website](https://www.whkcommercial.com.au)



## 6/3 Luso Drive, Unanderra

Approximate Gross Internal Area = 601.8 sq m

Scale in metres. Indicative only. Dimensions are approximate. All information contained herein is gathered from sources we believe to be reliable. However, we cannot guarantee its accuracy and interested persons should rely on their own enquiries. Some images may contain digital furniture.