

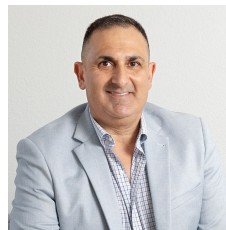


**17/10 - 12 Sylvester Avenue Unanderra NSW**

**2** 

- \* Currently Leased until 2023 + 1 year option
- \* Returning \$25,975 + GFST + Outgoings
- \* High ceiling, plus High Electric Roller door clearance
- \* 2 Undercover parking + visitor parking
- \* Warehouse 116 sqm , Mezzanine 49 sqm Total 165 sqm

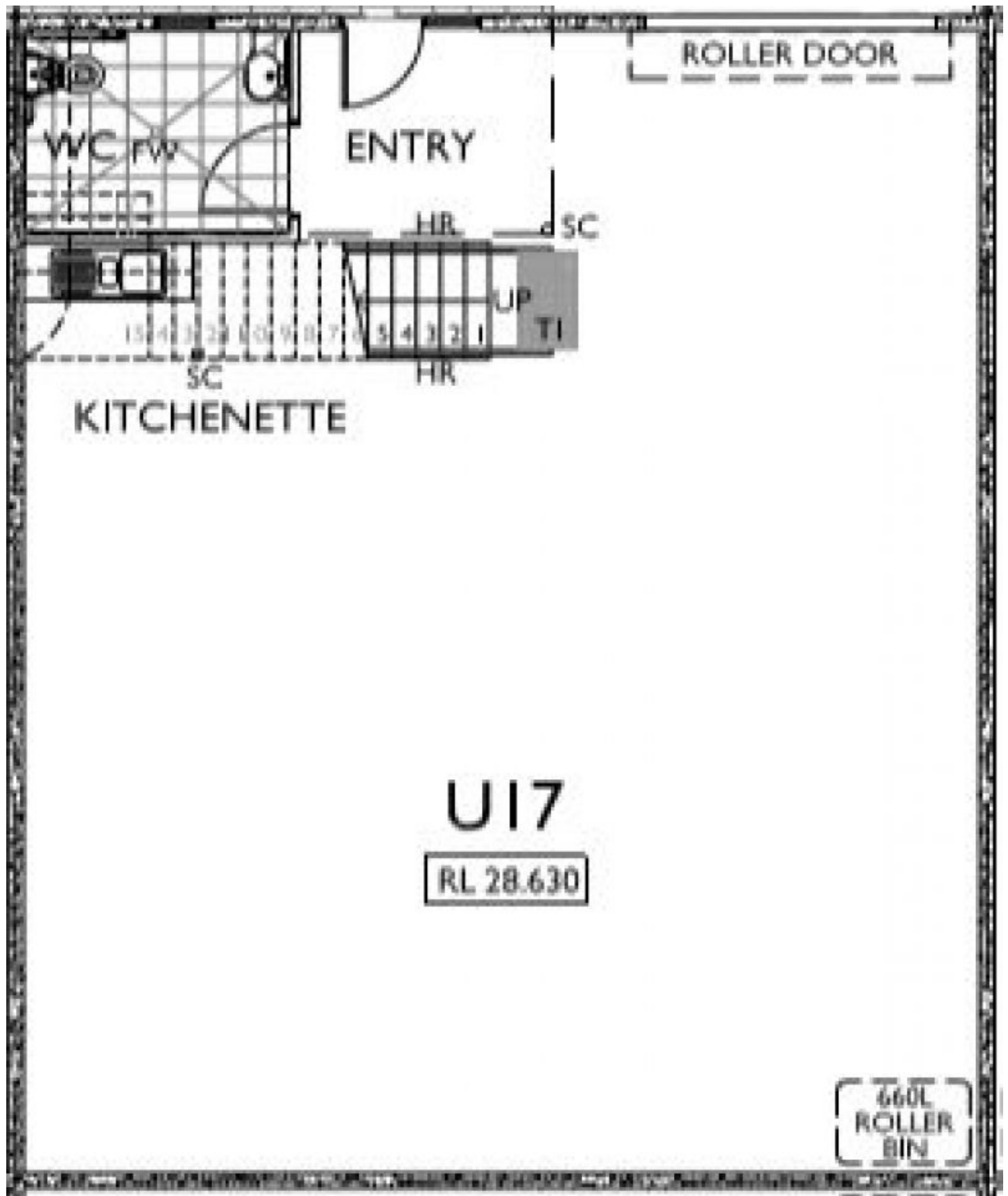
**Type** : Industrial  
**Building Size** : 165 sqm  
**View** : <https://www.whkcommercial.com.au/sale/nsw/wollongong-illawarra/unanderra/commercial/industrial/8045882>



**Harry Stefanou**  
02 4229 6640



**Mark Marinelli**  
02 4229 6640



U17

RL 28.630

660L  
ROLLER  
BIN

