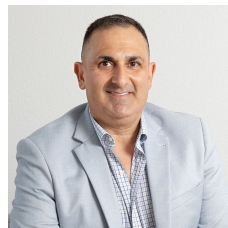


3/10 - 12 Sylvester Avenue Unanderra NSW

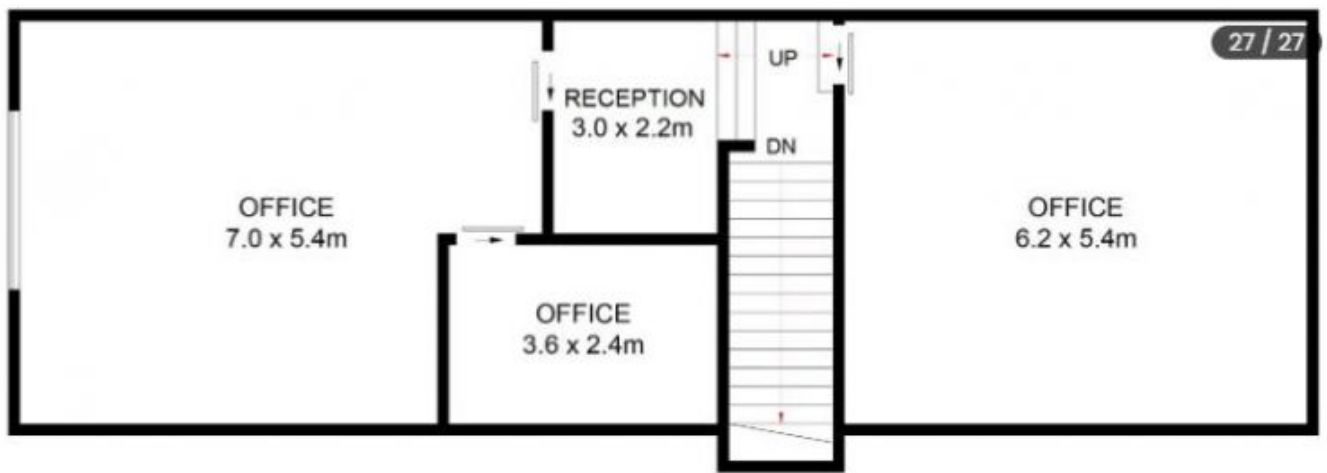
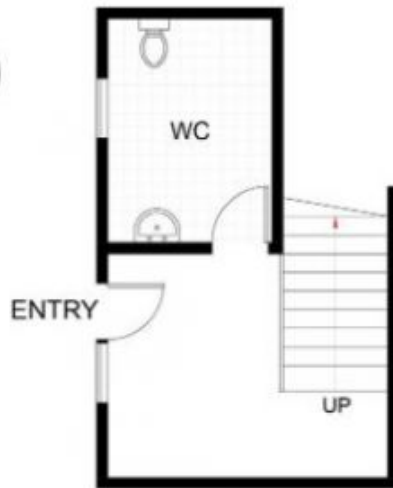
2 

- * 96sqm warehouse and 86 sqm office approximately
- * Fully fenced and secure complex
- * Dual street frontages - Sylvester Ave & Princes Highway
- * Modern tilt up concrete panel construction
- * 2 undercover car spaces, NBN and access to three phase power
- * Great Investment or Owner /Occupy opportunity

Type : Industrial
Building Size : 182 sqm
View : <https://www.whkcommercial.com.au/sale/nsw/wollongong-illawarra/unanderra/commercial/industrial/8045941>



Harry Stefanou
02 4229 6640

**UPPER LEVEL****ENTRY LEVEL**

(NOT SHOWN IN ACTUAL
LOCATION / ORIENTATION)

3/10 Sylvester Avenue, Unanderra