

16/2 Indigo Loop Yallah NSW



* 200 sqm Industrial Unit - 144 sqm Warehouse with 56 sqm mezz/office

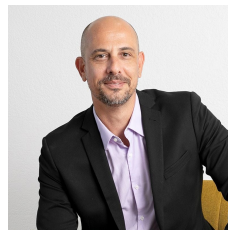
* Modern concrete tilt up construction with kitchenette and bathroom amenities.

* Includes 1 undercover car space with ample parking adjacent

* Excellent truck access and maneuverability

* Great escarpment views while being moments from Yallah Interchange and Albion Park Rail Bypass

Type : Industrial
Building Size : 200 sqm
View : <https://www.whkcommercial.com.au/lease/nsw/wollongong-illawarra/yallah/commercial/industrial/8054250>



Mark Marinelli
02 4229 6640



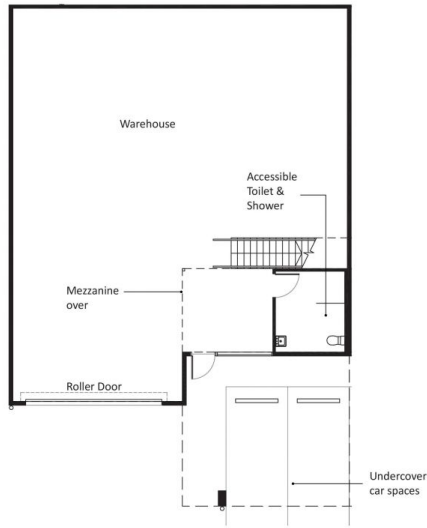
Elena Koroleva
02 4229 6640

TYPICAL FLOOR PLANS

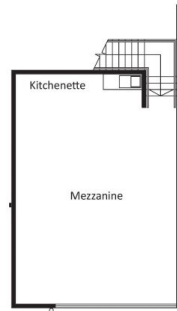
1:150@A3

SIMILAR UNIT #: 02, 03, 07, 08, 09, 10, 11, 12, 13, 15, 16, 17, 18, 19, 20, 21, 22, 23, 24,26, 27, 28, 29, 30, 31

GRAEVELIA
CENTRAL
Graevella Estate - 105 Yallah Road, Yallah, NSW



Ground Floor



Mezzanine



Please note the Architectural Plans were produced prior to completion of construction and is illustrative only. Changes may be made during construction. Dimensions, tile layouts, finishes and specifications are subject to change without notice in accordance with the provisions of the Contract of Sale.