



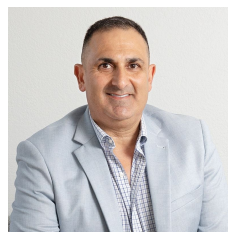
**5/6-8 Ralph Black Drive North Wollongong NSW**

2 

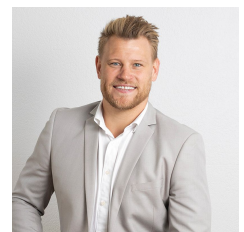
- \* Centrally located Industrial Bay, approx. 205 sqm warehouse
- \* Includes office space on ground floor and first floor with partially enclosed mezz/office
- \* Off street parking available
- \* Roller door access plus 3 phase power if needed
- \* Located in centre of North Wollongong industrial estate
- \* Open plan floor space, would suit multiple businesses

**Type** : Industrial  
**Price** : Price On Application pa  
**Building Size** : 205 sqm  
**View** : <https://www.whkcommercial.com.au/lease/nsw/wollongong-illawarra/north-wollongong/commercial/industrial/8068409>

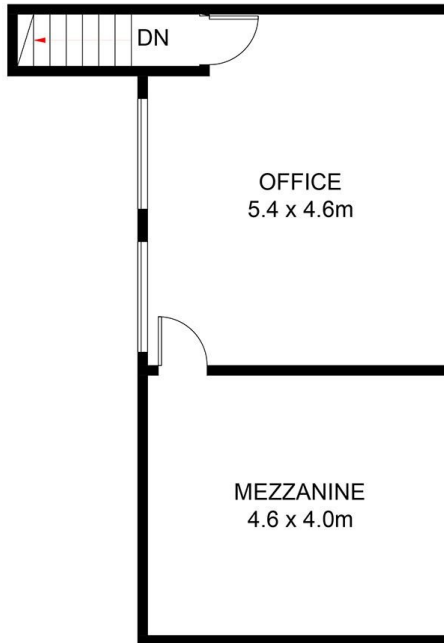
CALL TODAY FOR FURTHER INFORMATION!



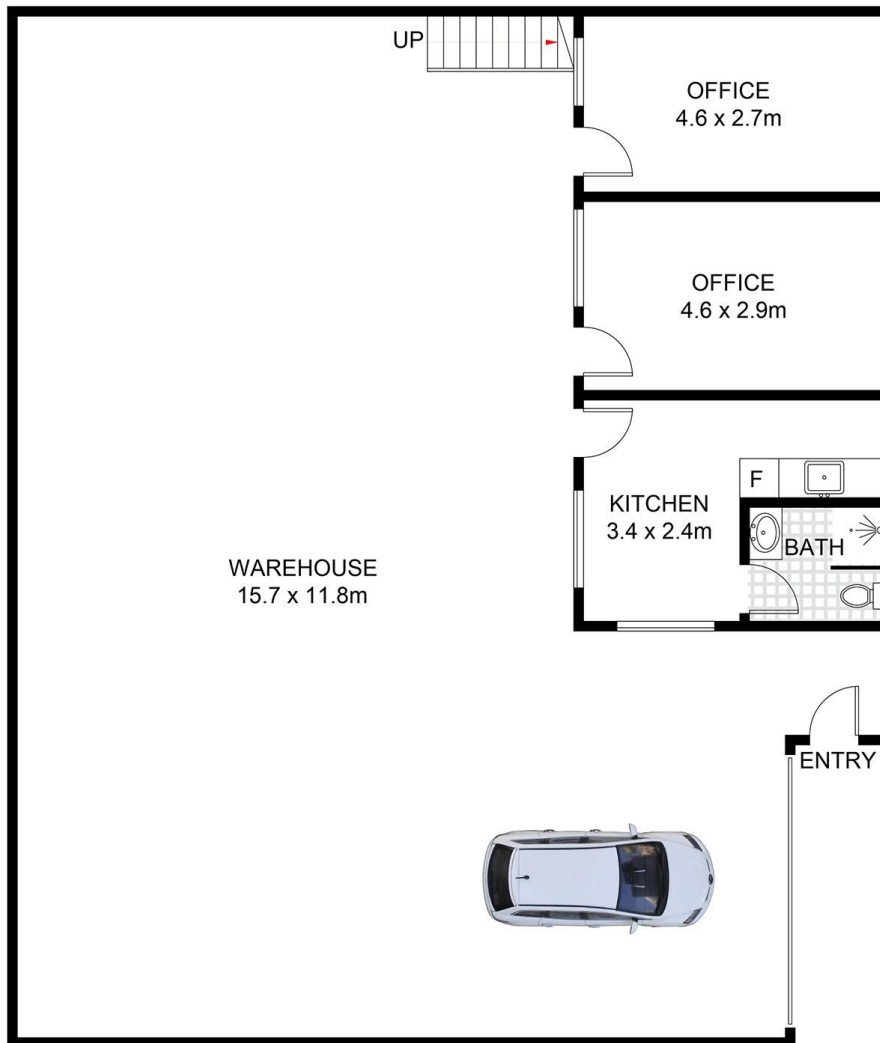
**Harry Stefanou**  
02 4229 6640



**Shaun Baulch**  
02 4229 6640



**TOP FLOOR**



**GROUND FLOOR**

## 5/6-8 Ralph Black Drive, North Wollongong

Approximate Gross Internal Area = 247.4 sq m

Scale in metres. Indicative only. Dimensions are approximate. All information contained herein is gathered from sources we believe to be reliable. However, we cannot guarantee its accuracy and interested persons should rely on their own enquiries. Some images may contain digital furniture.

M.M



UNIT	ENTITLEMENT
1	102
2	102
3	201
4	175
5	210
6	129
7	129
8	181
9	196
10	105
11	111
12	116
13	119
14	124
TOTAL	2000

C.P. DENOTES COMMON PROPERTY

THE HEIGHT OF THE CAR SPACES IS RESTRICTED TO 3 ABOVE THE UPPER SURFACE OF THEIR CONCRETE FLOOR.