



### 21 Kenny Street Wollongong NSW

\* Freestanding single building of over 1000sqm located on the fringe of Wollongong CBD

\* Consists of showroom, offices, warehouse space and amenities, including male/female and disabled facilities and kitchen

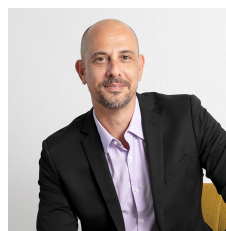
\* High clearance roller door at side with high internal warehouse clearance

\* Off-street parking for staff/visitors up to six, close proximity to council parking facilities

\* Short term lease available

[For full version visit the website](https://www.whkcommercial.com.au)

<b>Type</b>	: Industrial
<b>Price</b>	: Price on Application pa
<b>Building Size</b>	: 1090 sqm
<b>View</b>	: <a href="https://www.whkcommercial.com.au/lease/nsw/wollongong-illawarra/wollongong/commercial/industrial/8068413">https://www.whkcommercial.com.au/lease/nsw/wollongong-illawarra/wollongong/commercial/industrial/8068413</a>

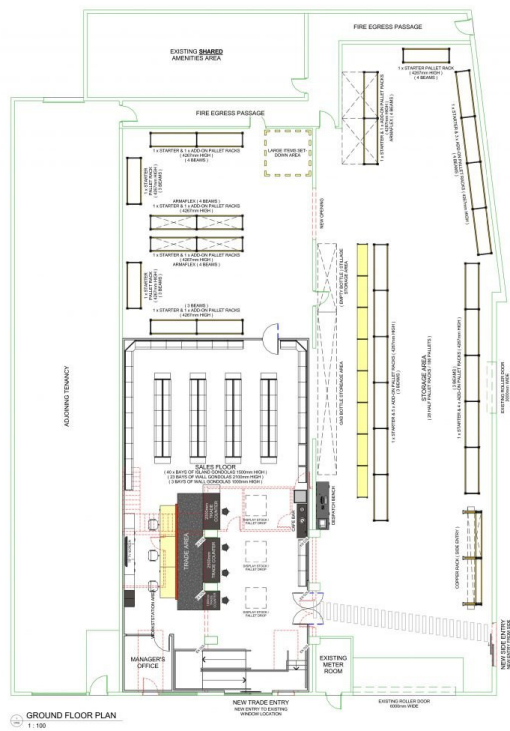


**Mark Marinelli**  
02 4229 6640



**Elena Koroleva**  
02 4229 6640

No.	Rev.	Date	By	Appr.



<b>PALLET RACKS</b>		
- 3 BEAM RACK (8 PALLETS)	@ 15 BAYS	(120 PALLETS)
- 4 BEAM RACK (6 PALLETS)	@ 7 BAYS	(42 PALLETS)
- 4 AMALX RACK (4 PALLETS)	@ 8 BAYS	(28 PALLETS)
<b>TOTAL:</b>	<b>28 HALF BAYS</b>	<b>(186 PALLETS)</b>

**BUILDING AREA**  
= 750m<sup>2</sup>  
**SHARED BUILDING AREA**  
= 100m<sup>2</sup>  
**SITE AREA**  
= 1177m<sup>2</sup>

**CONCEPT LAYOUT**  
FOR DISCUSSION ONLY

