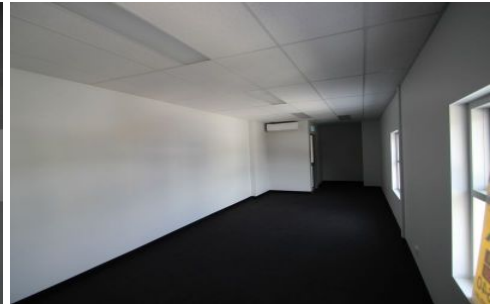




AVAILABLE DECEMBER 2017



15/41-47 Five Islands Road PORT KEMBLA NSW

2 

- Brand New Modern Design
- High Caliber Build
- Central Location
- High Clearance Electric Roller Doors
- Security Gated Complex
- Close to Blue Scope and Harbour

Type : Industrial
Building Size : 165 sqm
Land Size : 165 sqm
View : <https://www.whkcommercial.com.au/lease/nsw/wollongong-illawarra/port-kembla/commercial/industrial/8069547>