

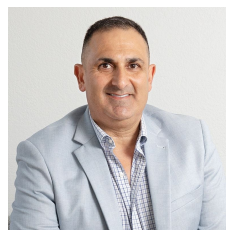


29 Glastonbury Avenue Unanderra NSW

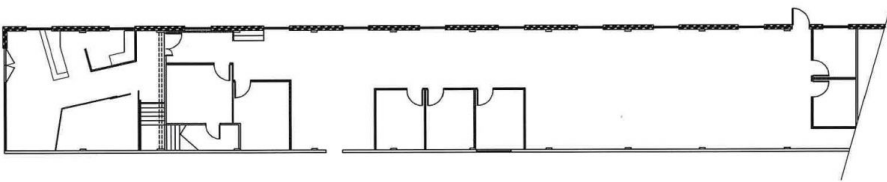
80 

- * Modern reception, meeting rooms, boardroom & offices
- * 2 x 20 tonne & 2 x 16 tonne overhead cranes
- * Modern showers, change rooms and amenities
- * Wash bay and hardstand area
- * Easy access to F6 Freeway, access suitable for B-doubles
- * Potential to extend warehouse if needed
- * Excellent high voltage power with sub station
- * TOTAL LAND AREA 15,600sqm
- * Call today to inspect

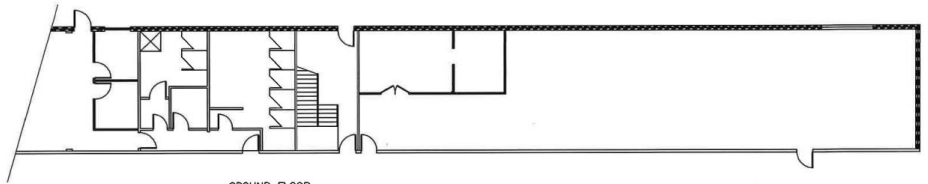
Type : Industrial
Building Size : 4000 sqm
Land Size : 15600 sqm
View : <https://www.whkcommercial.com.au/lease/nsw/wollongong-illawarra/unanderra/commercial/industrial/8069661>



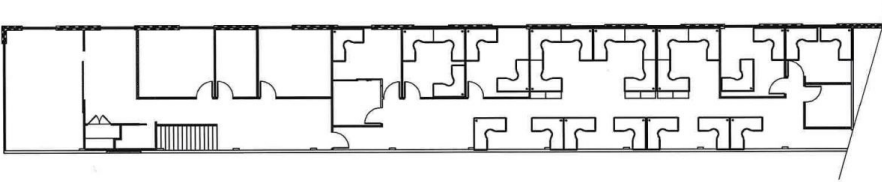
Harry Stefanou
02 4229 6640



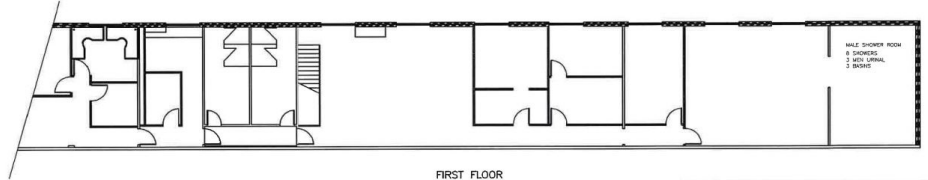
GROUND FLOOR



GROUND FLOOR



FIRST FLOOR



FIRST FLOOR

COPYRIGHT: NOT TO BE SHOWN TO ANY THIRD PARTY WITHOUT PERMISSION FROM CYCLO



PROJECT: SOUTHERN ENGINEERING SERVICES
DRAWING: GENERAL PLAN

REVISION: H

DATE: 4 OCTOBER 2012

SCALE: 1:200@A3

DRAWN: JMG

CHECKED: CAM

