

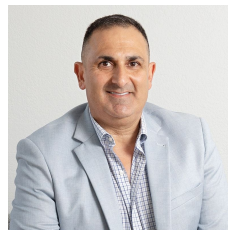


7/6-8 Ralph Black Drive North Wollongong NSW

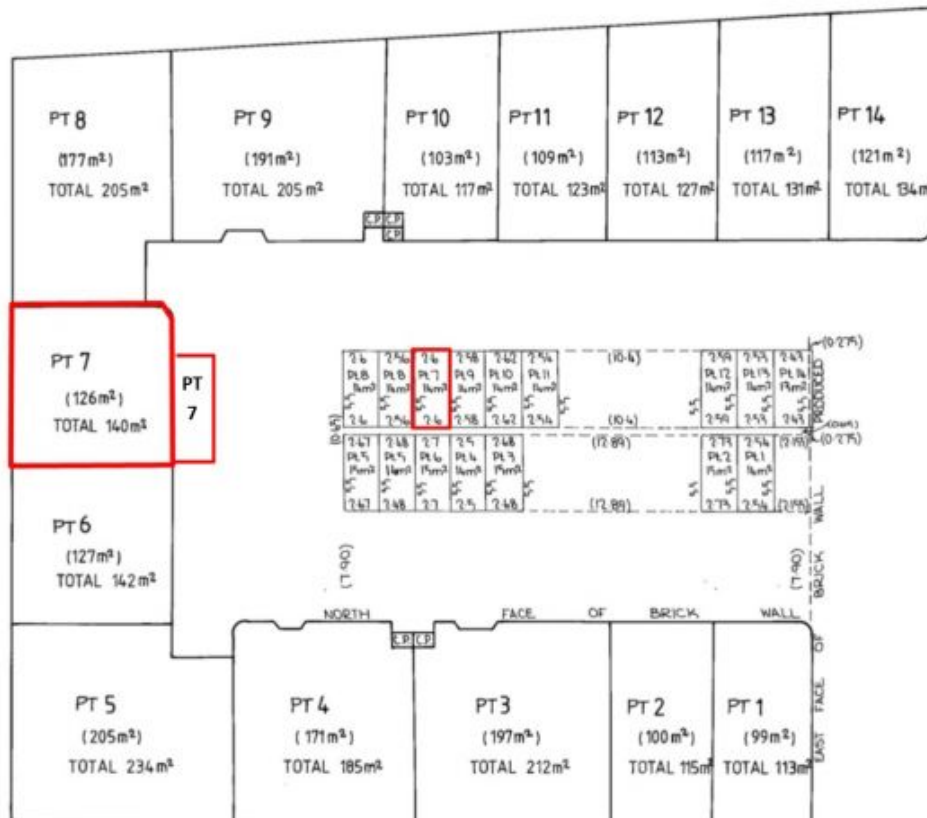


- * Located in a prime location on Ralph Black Drive
- * 126 sqm with 2 allocated car spaces
- * Established complex with long standing tenants
- * Suit multiple businesses - storage, manufacture, workshop, education
- * Contact today to arrange private inspection.

Type : Industrial
Building Size : 126 sqm
Land Size : 126 sqm
View : <https://www.whkcommercial.com.au/lease/nsw/wollongong-illawarra/north-wollongong/commercial/industrial/8069768>



Harry Stefanou
02 4229 6640



SCHEDULE OF UNIT ENTITLEMENT

UNIT	ENTITLEMENT
1	102
2	102
3	201
4	175
5	210
6	129
7	129
8	181
9	186
10	185
11	181
12	186
13	189
14	174
TOTAL	2000

C.P. DENOTES COMMON PROPERTY

THE HEIGHT OF THE CAR SPACES IS RESTRICTED TO 4 ABOVE THE UPPER SURFACE OF THEIR CONCRETE FLOOR.