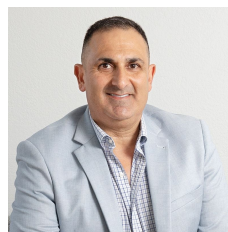


8/46 Montague Street North Wollongong NSW

2 

- * Secure complex, electronic access
- * High clearance roof and roller door
- * Mezzanine storage
- * Modern facilities
- * Long lease available
- * Clean workspace

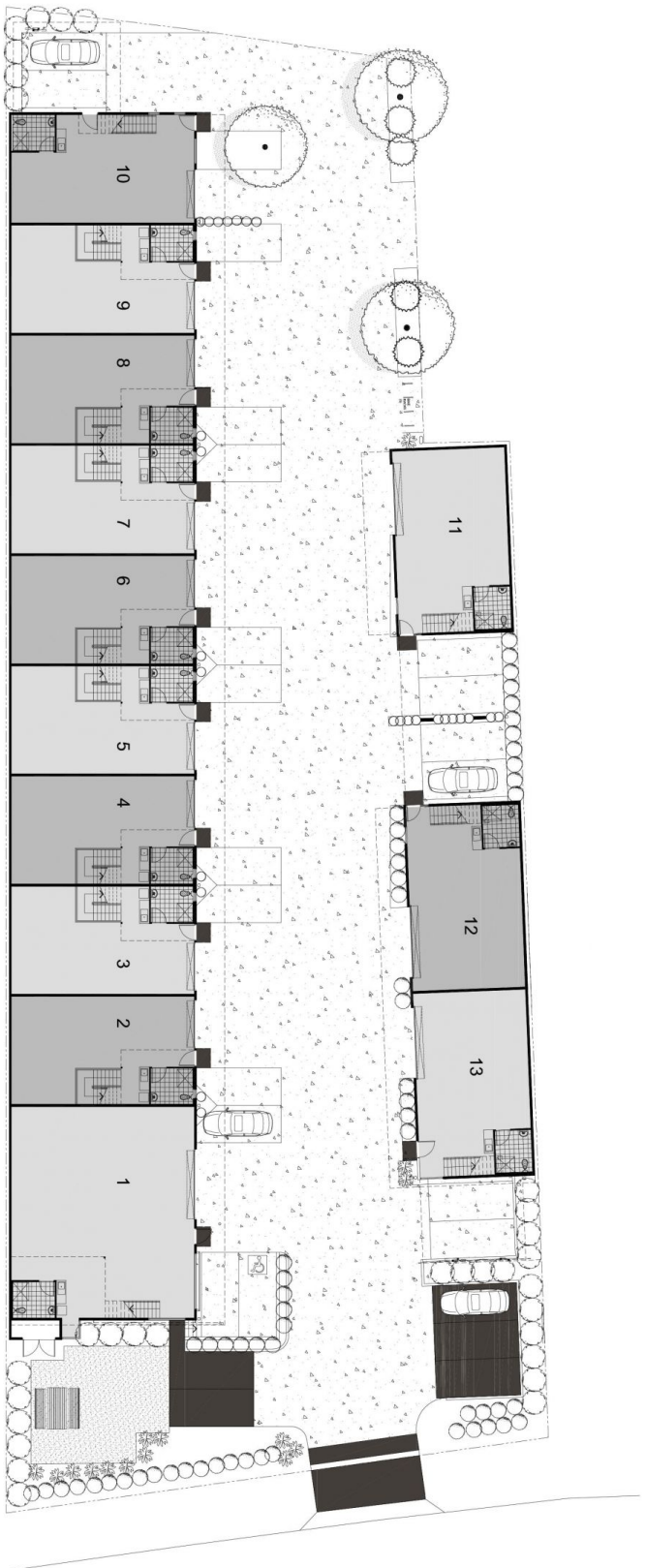
Type : Industrial
Building Size : 104 sqm
Land Size : 2903 sqm
View : <https://www.whkcommercial.com.au/lease/nsw/wollongong-illawarra/north-wollongong/commercial/industrial/8069776>

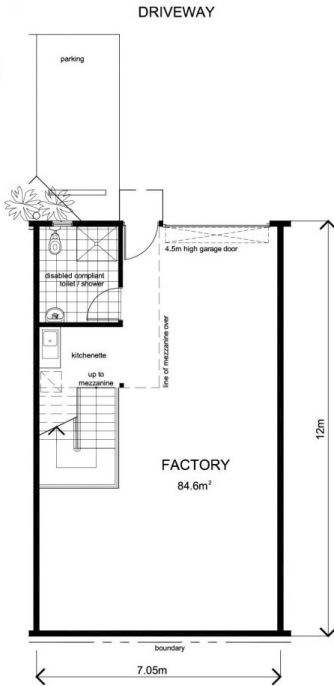
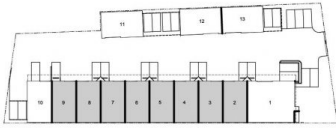


Harry Stefanou
02 4229 6640



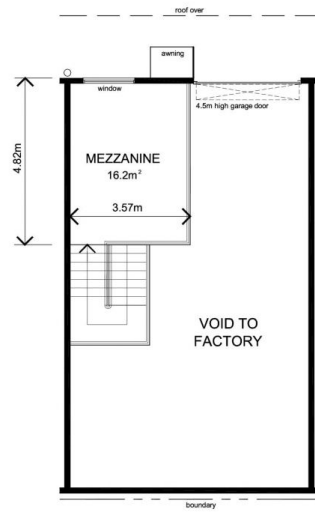
Mark Marinelli
02 4229 6640





GROUND FLOOR PLAN

UNITS 3, 5, 7 & 9 AS DRAWN
UNITS 2, 4, 6 & 8 MIRRORED



MEZZANINE FLOOR PLAN

UNITS 3, 5, 7 & 9 AS DRAWN
UNITS 2, 4, 6 & 8 MIRRORED

