



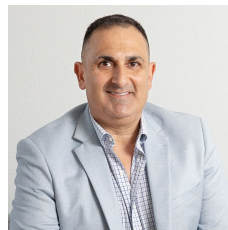
342 Keira Street Wollongong NSW

Take advantage of this rare opportunity to secure this 300 sqm Keira Street warehouse, with front of house, retail/reception area and mezzanine office space.

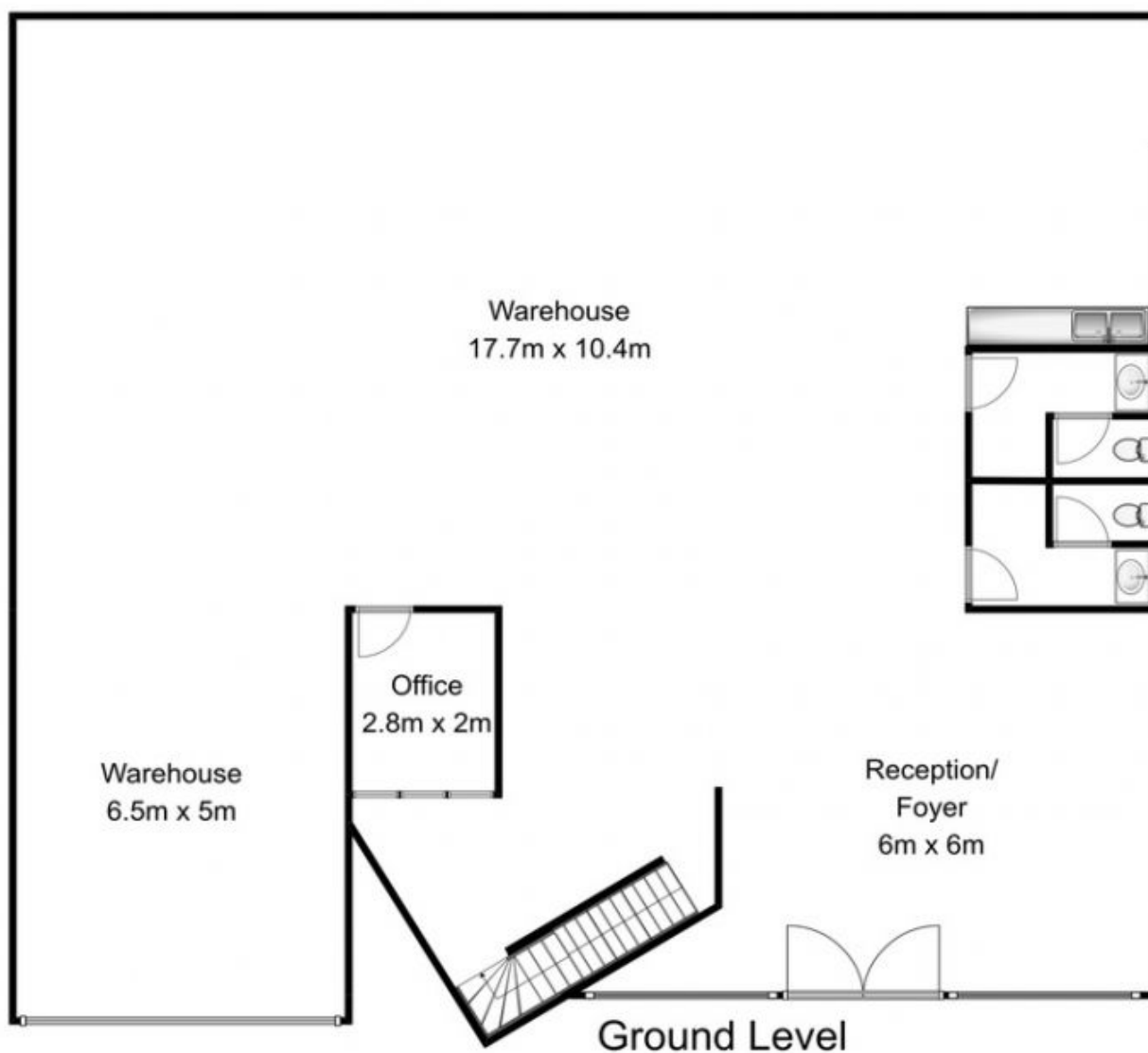
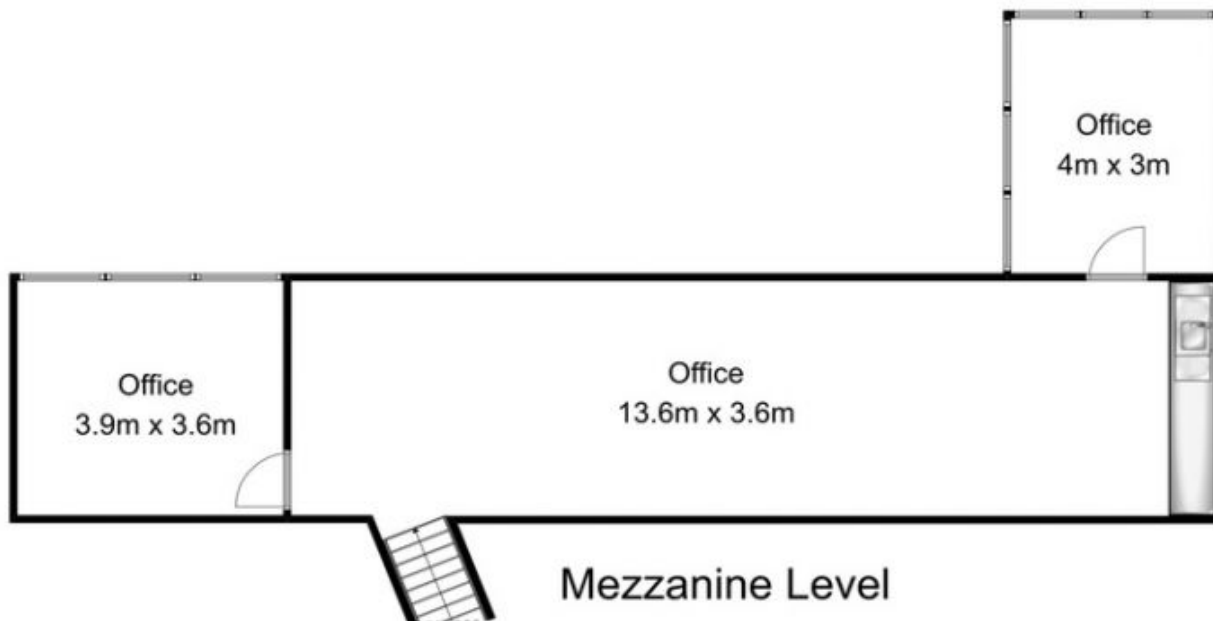
Property features include;

- * 300 sqm warehouse
- * retail/reception and mezzanine office space
- * walking distance to Wollongong CBD
- * plenty of power
- * roller door access
- * customer parking at front or drive through

Type : Industrial
Building Size : 300 sqm
Land Size : 500 sqm
View : <https://www.whkcommercial.com.au/lease/nsw/wollongong-illawarra/wollongong/commercial/industrial/8069809>



Harry Stefanou
02 4229 6640



342 Keira Street Wollongong

Total Approx. Floor Area 300 SQ.M

Open2view used the best endeavors to make the information on this floor plan accurate and true. Unit area if shown is approximate only.
 Open2view does not guarantee or warrant the accuracy of any information or statement contained on the above floor plan.
 Buyers should not rely on this floor plan as indicating the final design, appearance, content or as constructed format of the building.
 Buyers must make and rely on their own enquiries and should obtain advice in making any decision based on the information contained herein.