

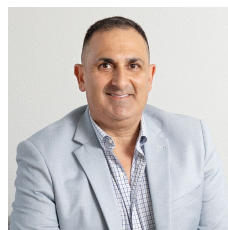


13/46 Montague Street North Wollongong NSW

2 

- * Front of Complex
- * High street exposure
- * Secure gated Complex
- * 90 sqm warehouse and 37 sqm carpeted office
- * 2 Undercover parking spaces

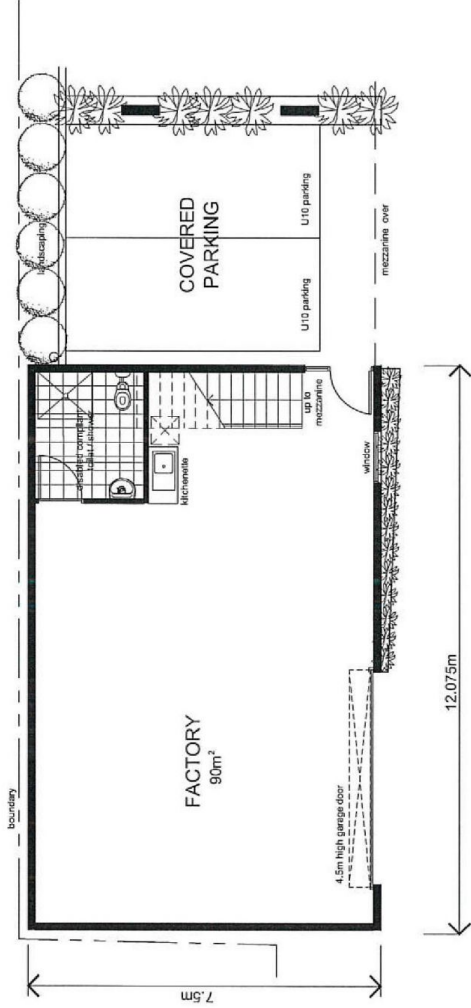
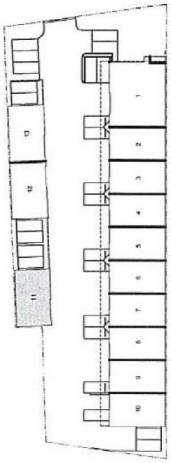
Type : Industrial
Building Size : 127 sqm
Land Size : 127 sqm
View : <https://www.whkcommercial.com.au/lease/nsw/wollongong-illawarra/north-wollongong/commercial/industrial/8069841>



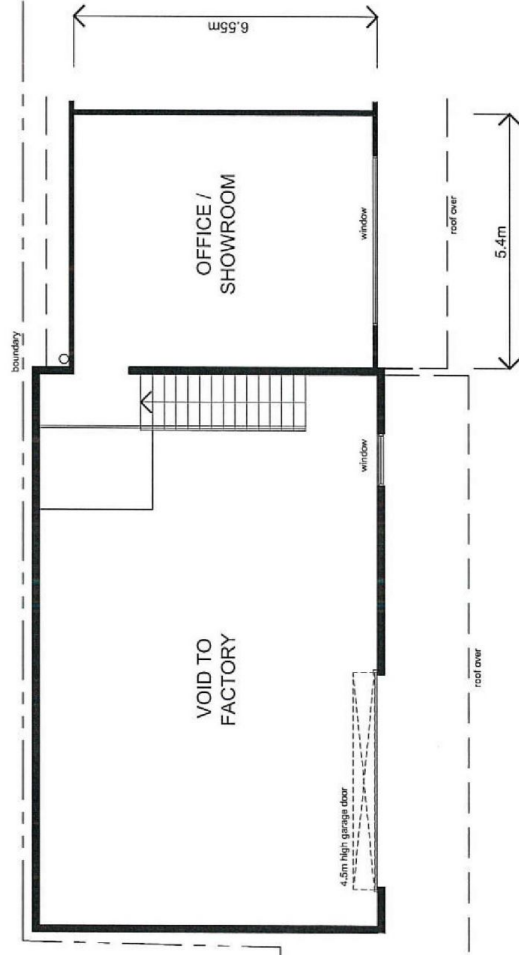
Harry Stefanou
02 4229 6640



Mark Marinelli
02 4229 6640



DRIVEWAY
GROUND FLOOR PLAN



MEZZANINE FLOOR PLAN