

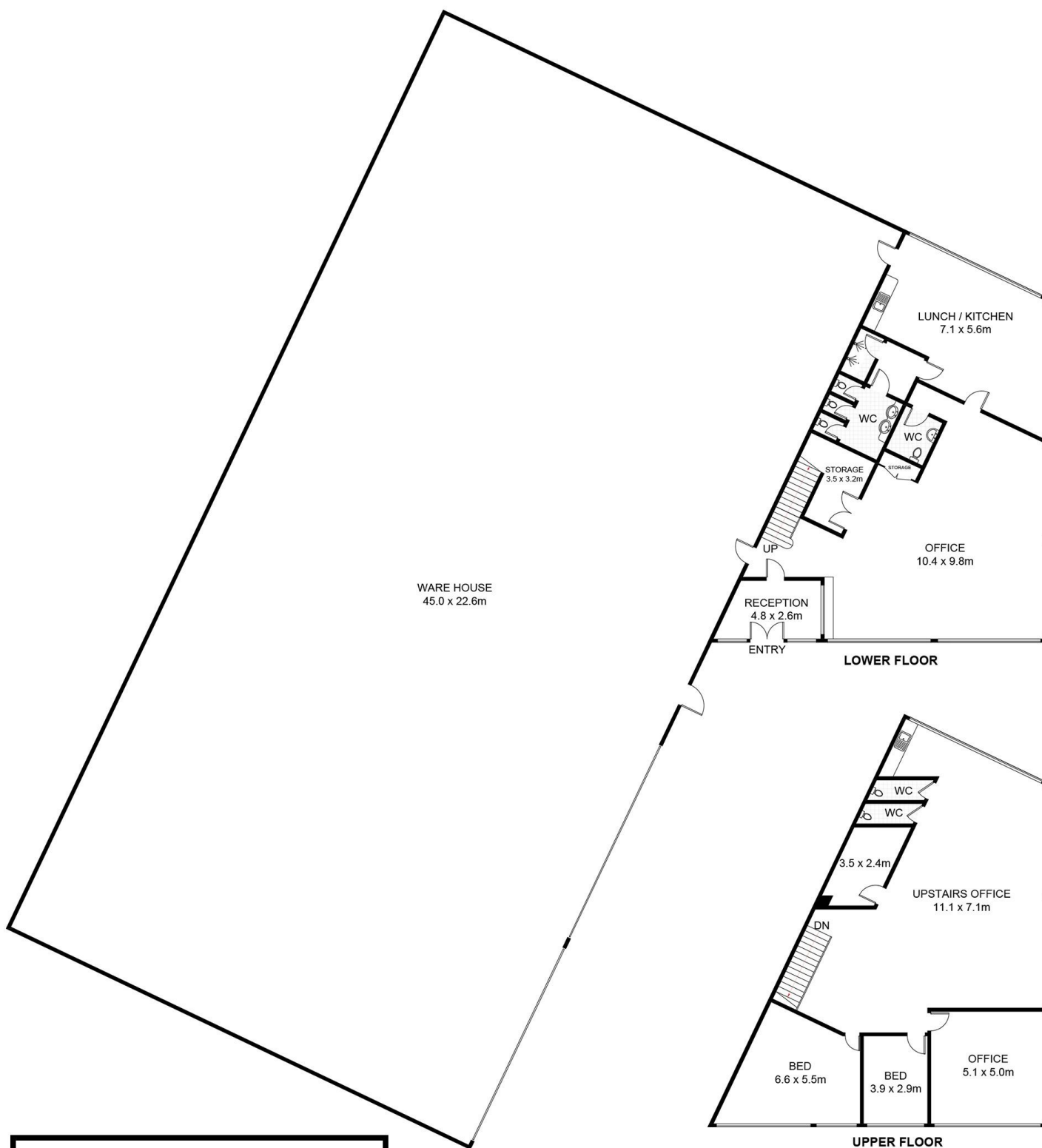


2/244 Nolan Street Unanderra NSW

- * PREMIUM CORPORATE OFFICE
- * HIGH CLEARANCE DISTRIBUTION WAREHOUSE
- * SEMI TRAILER ACCESS
- * ADDITIONAL HARDSTAND, OFFICE & WAREHOUSE AVAILABLE
- * EASY ACCESS TO FREEWAY & PORT KEMBLA HARBOUR
- * READY TO GO DISTRIBUTION 'HUB'
- * UP TO 9M CLEARANCE
- * CRANE RAILS TO ACCOMMODATE 10T OVERHEAD CRANE
- * HARDSTAND + PARKING 1500 SQM
- * LONG TERM LEASING INCENTIVES

Type	: Industrial
Building Size	: 1342 sqm
Land Size	: 2842 sqm
View	: https://www.whkcommercial.com.au/lease/nsw/wollongong-illawarra/unanderra/commercial/industrial/8069842

[For full version visit the website](https://www.whkcommercial.com.au)



Upper Floor Total Size - 160.32 sq m
Lower Floor Total Size - 165.36 sq m
Offices Total Size - 325.68 sq m
Warehouse Total Size - 1017 sq m

2/244 Nolan Street, Unanderra

Scale in metres. Indicative only. Dimensions are approximate. All information contained herein is gathered from sources we believe to be reliable. However, we cannot guarantee its accuracy and interested persons should rely on their own enquiries.