



14 John Cleary Place Coniston NSW

20 

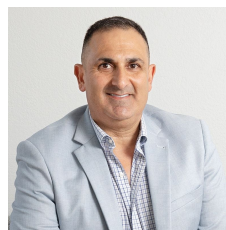
- * Modern facility catering for all aspects of business
- * Ideal location for any large scale operation

Warehouse 1:

- * 1500m2 modern, light filled warehouse
- * 3 x 5t Cranes
- * Multiple roller door access including drive through
- * Tradie access and reception area
- * Warehouse office space includes two fully enclosed rooms with glass windows into warehouse

[For full version visit the website](https://www.whkcommercial.com.au/lease/nsw/wollongong-illawarra/coniston/commercial/industrial/8069843)

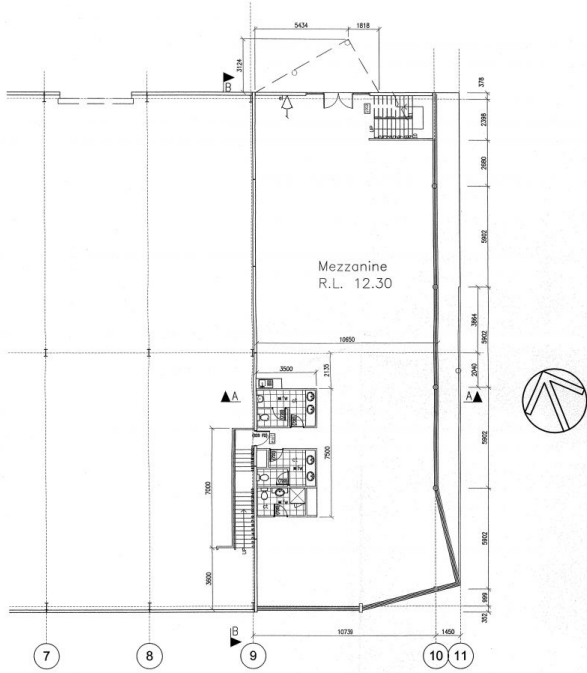
Type : Industrial
Building Size : 2900 sqm
Land Size : 9386 sqm
View : <https://www.whkcommercial.com.au/lease/nsw/wollongong-illawarra/coniston/commercial/industrial/8069843>



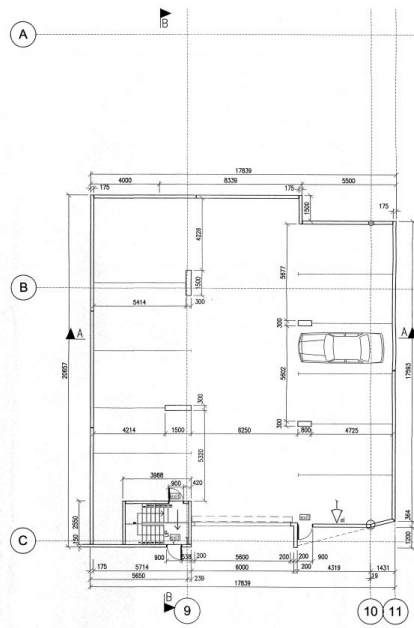
Harry Stefanou
02 4229 6640



Mark Marinelli
02 4229 6640

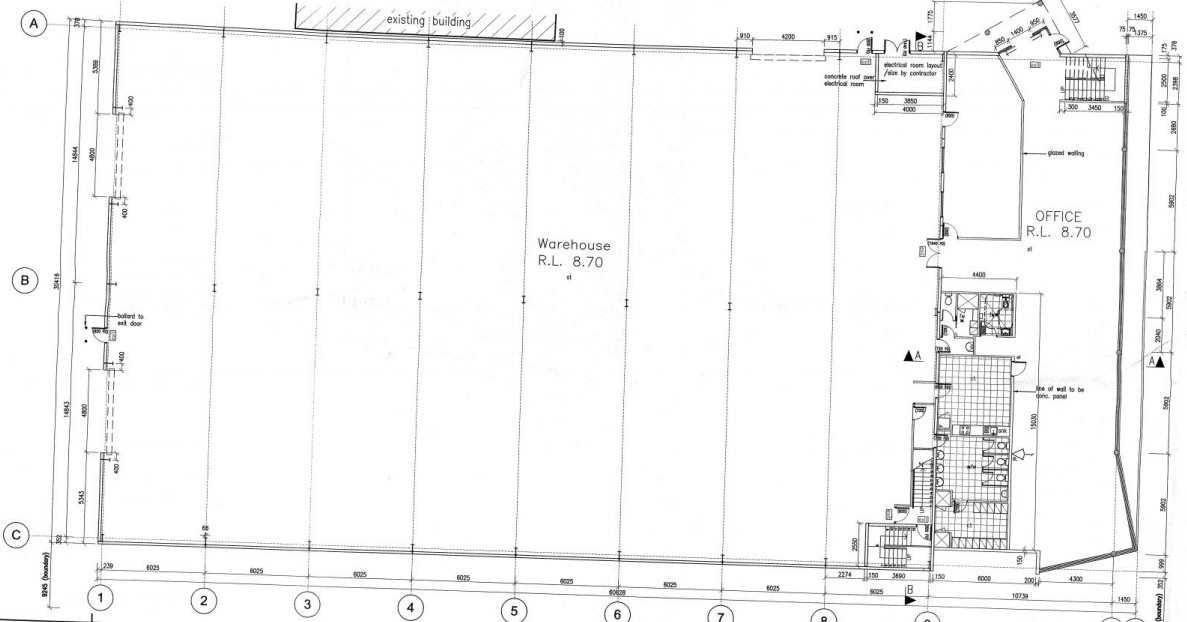


MEZZANINE FLOOR PLAN (R.L. 12.30)
Scale 1:100



BASEMENT FLOOR PLAN (R.L. 6.00)
Scale 1:100

REV.	DETAILS	DATE	BY	WED & S S P/L wollongong engineering design & survey services pty. ltd. A.C.N.000386283	PHONE: 00242293180 FAX: 00242293183	PROJECT PROPOSED INDUSTRIAL DEVELOPMENT Lot 2 OLD SPRINGHILL ROAD WOLLONGONG NSW 2500	CLIENT: Matt Glass	DETAIL PLAN	PROJECT NO. DWG NO. INDEX
C	FOR C.C.	28/06/09	SOP						Sheet 2/2
B	FOR C.C.	25/05/09	SOP	7/46 Kembla Street wollongong, 2500					Approved
A	FOR REVIEW	21/04/09	SOP						Issue of plan



GROUND FLOOR PLAN (R.L. 8.70)
Scale 1:100

- Legend**
- key Item description
 - 15 floor structure
 - fs Floor finish
 - fs selected paint finish
 - fs 2000 high fire rated door with no show edge
 - fs slab unit, height as required with hot & cold water
 - fs multifunction electric hot water unit
 - fs steel framed door
 - fs ceramic tile finish
 - fs mechanical ventilation to ASCA requirements (split show floor waste)
 - fs fire escape
 - fs steel sign above door
 - fs emergency lighting to Australia Standards
 - fs fire risk liquid to be contractor

CONSTRUCTION CERTIFICATE
This is the plan and specifications for the proposed building.
Engineer *[Signature]*
Certificate No. **22103**
D.A. No. **0504/03/2009**
Office R. No. **4107** Application No. **4107**
Signed *[Signature]*

REV.	DETAILS	DATE	BY	WED & S S P/L wollongong engineering design & survey services pty. ltd. A.C.N.000386283	PHONE: 00242293180 FAX: 00242293183	PROJECT PROPOSED INDUSTRIAL DEVELOPMENT Lot 2 OLD SPRINGHILL ROAD WOLLONGONG NSW 2500	DETAIL PLAN	PROJECT NO. DWG NO. INDEX
C	FOR C.C.	28/06/09	SOP					Sheet 2/2
B	FOR C.C.	25/05/09	SOP	7/46 Kembla Street				Approved