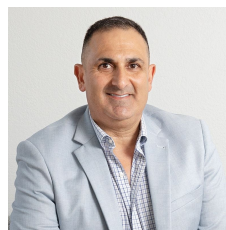


234 Corrimal Street Wollongong NSW



- * High exposure location
- * 2 Street Access from Corrimal St and Swan St.
- * Residence can be converted to Office/Retail Use - or live in residence and office/business location
- * Open Plan Warehouse, newly refurnished flooring throughout.
- * Would suit multiple uses
- * Zoned B6 - Enterprise corridor

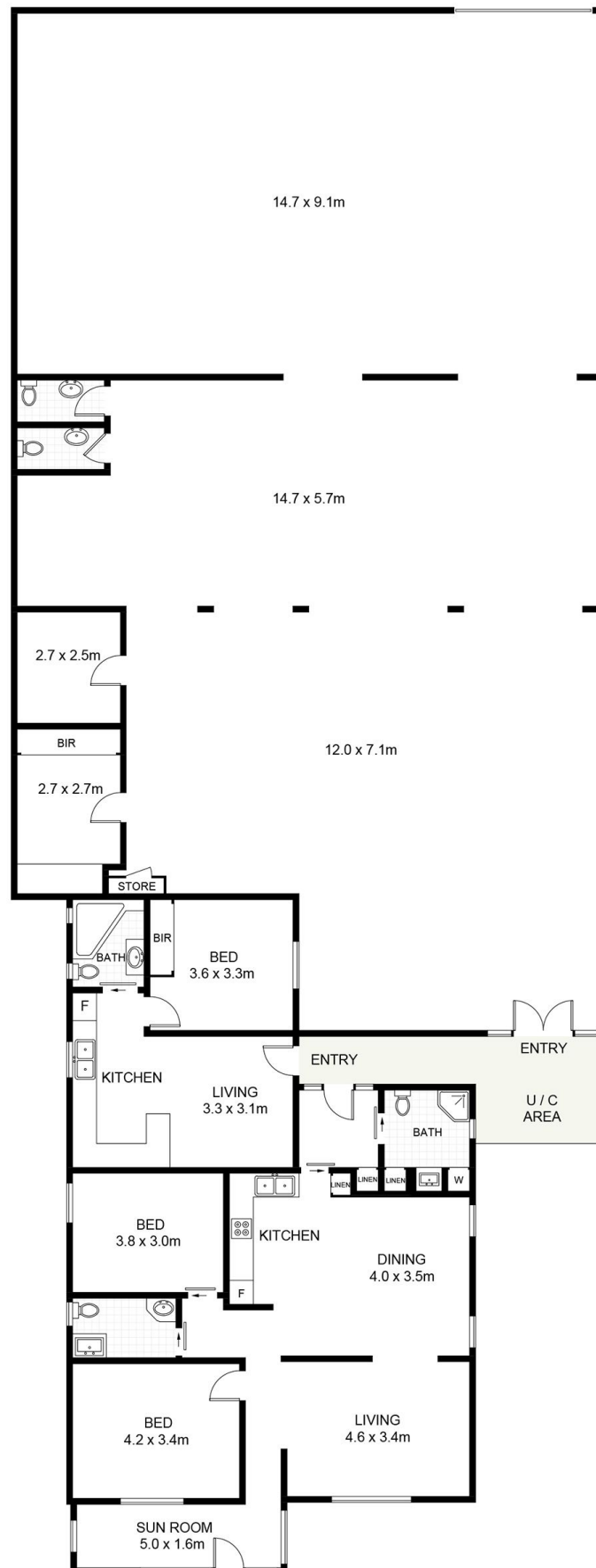
Type : Industrial
Building Size : 378 sqm
Land Size : 645 sqm
View : <https://www.whkcommercial.com.au/lease/nsw/wollongong-illawarra/wollongong/commercial/industrial/8069861>



Harry Stefanou
02 4229 6640



Tony Moschella
02 4229 6640



234 Corrimal Street, Wollongong

Scale in metres. Indicative only. Dimensions are approximate. All information contained herein is gathered from sources we believe to be reliable. However, we cannot guarantee its accuracy and interested persons should rely on their own enquiries. Some images may contain digital furniture.