

## 98 Auburn Street Wollongong NSW

9 

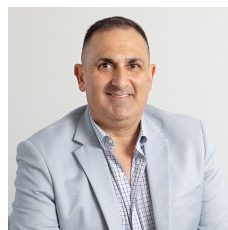
- \* Secure entire property - First class Showroom/Warehouse and Executive Office space with Mezzanine in Wollongong CBD
- \* Well presented and finished building with front courtyard and driveway access to rear
- \* Includes 9 parking spaces
- \* Suit multiple business uses and business types
- \* Located in busy business precinct of Wollongong

### Office Space -

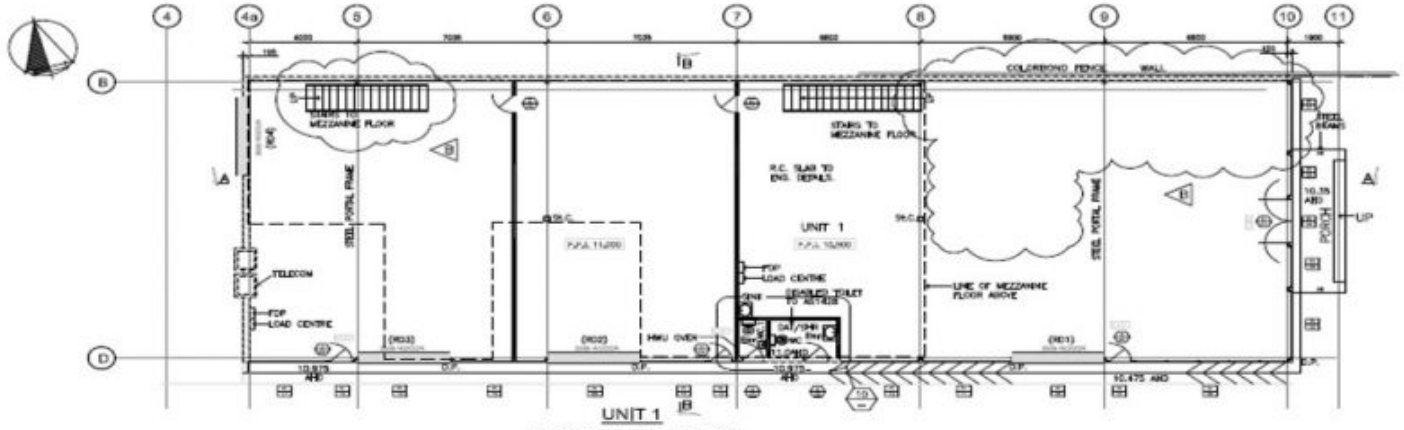
- \* 133.5 sqm of executive offices on mezzanine looking out over showroom.
- \* Fully ducted air conditioning, downlights, media ports
- \* Meeting room with kitchenette and additional amenities

[For full version visit the website](https://www.whkcommercial.com.au)

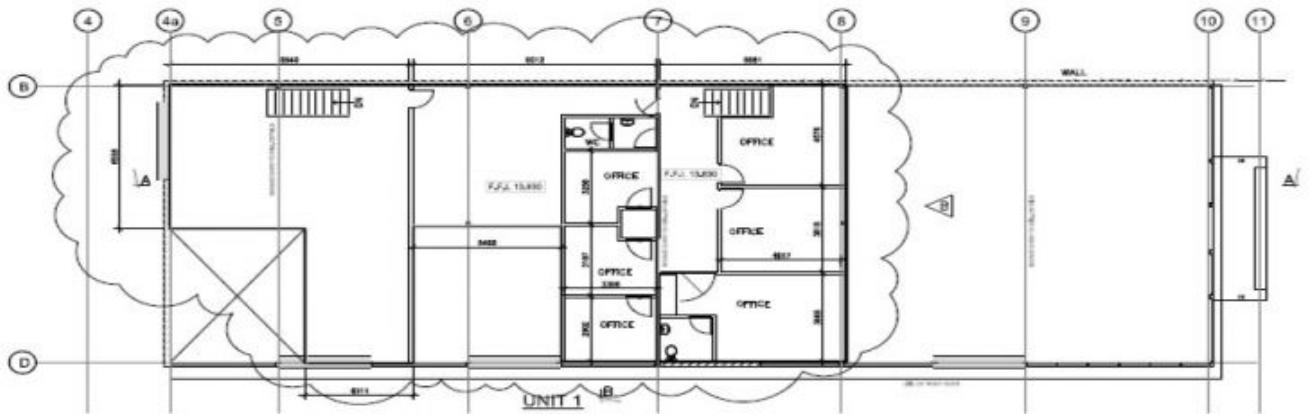
<b>Type</b>	: Industrial
<b>Building Size</b>	: 766.5 sqm
<b>Land Size</b>	: 1638 sqm
<b>View</b>	: <a href="https://www.whkcommercial.com.au/leases/nsw/wollongong-illawarra/wollongong/commercial/industrial/8069886">https://www.whkcommercial.com.au/leases/nsw/wollongong-illawarra/wollongong/commercial/industrial/8069886</a>



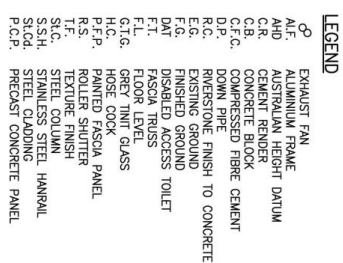
**Harry Stefanou**  
02 4229 6640



UNIT 1  
GROUND FLOOR PLAN



UNIT 1  
MEZZANINE FLOOR PLAN



D001 SITE / SITE ANALYSIS PLAN ELEVATIONS & NOTES  
D002 UNITS 1, 2 & 3 PLAN & ELEVATIONS  
D003 UNITS 4 & 5 PLAN & ELEVATION  
D004 ELEVATIONS & SECTIONS  
D007 DEMOLITION / SEDIMENTATION / WASTE MANAGEMENT  
PLAN / SITE ACCESS PLAN

VERIFIED FOR CONSTRUCTION BY:		DATE: / /
SCALES: 1:200 DRAWN A. JOSEPH DESIGN A. JOSEPH		ISSUE: B
PROJECT NO. 20	DOCUMENT IDENTIFICATION 710	DRAWING NO. DA01