

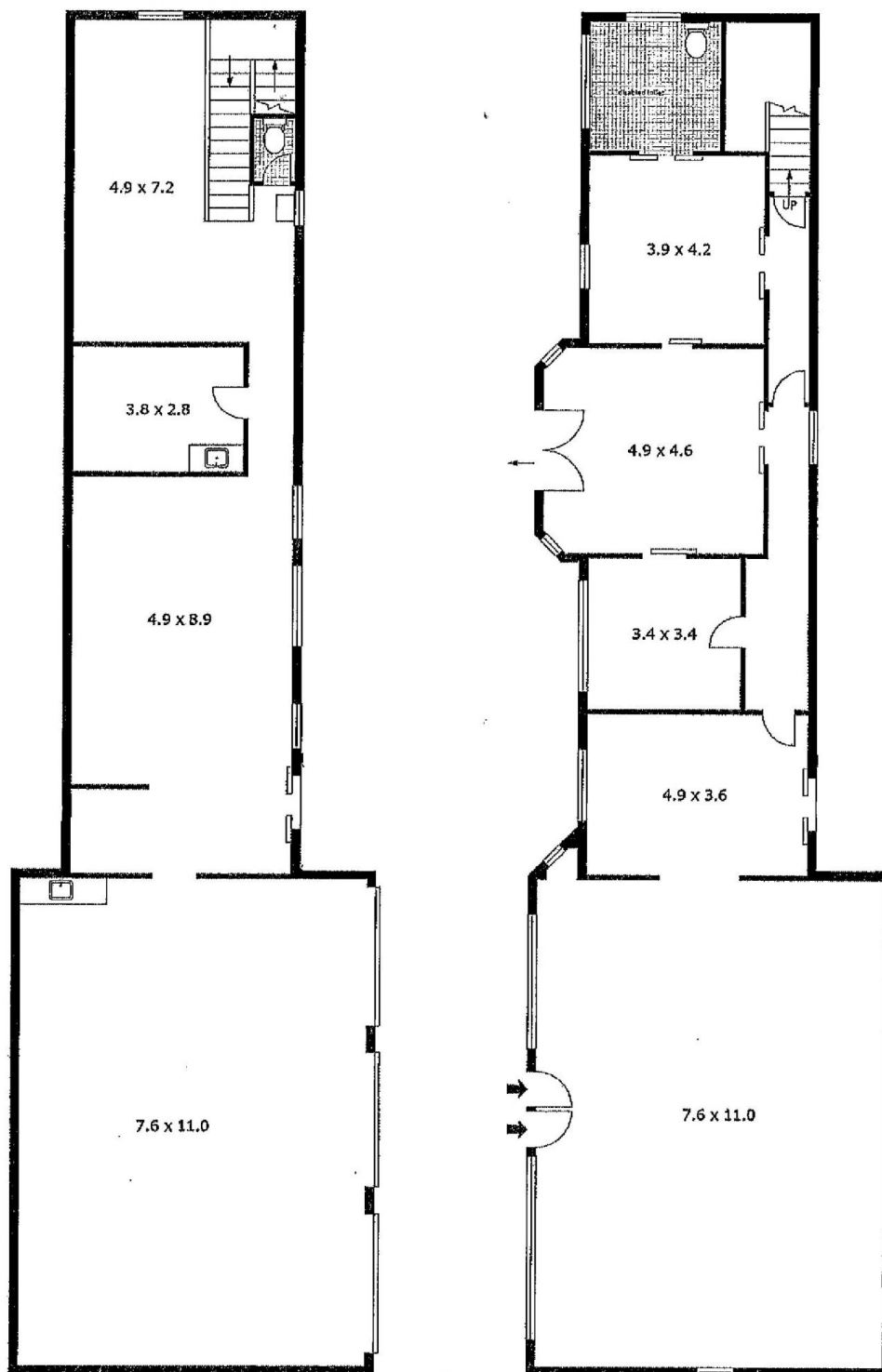


70 Keira Street Wollongong NSW

15 

- * ZONED B6 ENTERPRISE CORRIDOR
- * MULTIPLE USE SITE
- * GROUND FLOOR HAS DISABLED ACCESS
- * ONLY 500 METRES FROM GPT SHOPPING CENTRE
- * ONLY 900 METRES FROM TRAIN STATION AND BUSES ALMOST AT THE DOOR
- * WOULD SUIT PROFESSIONALS, BUSINESS, EDUCATION FACILITIES, FOOD, CHILD CARE, VETERINARY & MORE
- * RECENTLY REFURBISHED
- * LONG TERM LEASE AVAILABLE

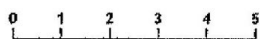
Type : Offices
Land Size : 972 sqm
View : <https://www.whkcommercial.com.au/lease/nsw/wollongong-illawarra/wollongong/commercial/offices/8069891>



LOWER LEVEL

(CURRENT PLAN)

ENTRY LEVEL



Scale in metres. Indicative only. Dimensions are approximate. All Information contained herein is gathered from sources we believe to be reliable. However we cannot guarantee its accuracy and interested parties should rely on their own enquiries.

Lower Level	-	94 m ²
Entry Level	-	183 m ²
Garage	-	84 m ²
Parking	-	552 m ²



70 Keira Street, Wollongong