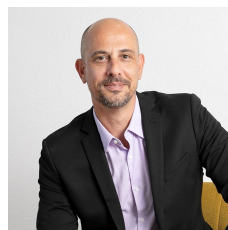


**8/46 Montague Street North Wollongong NSW**

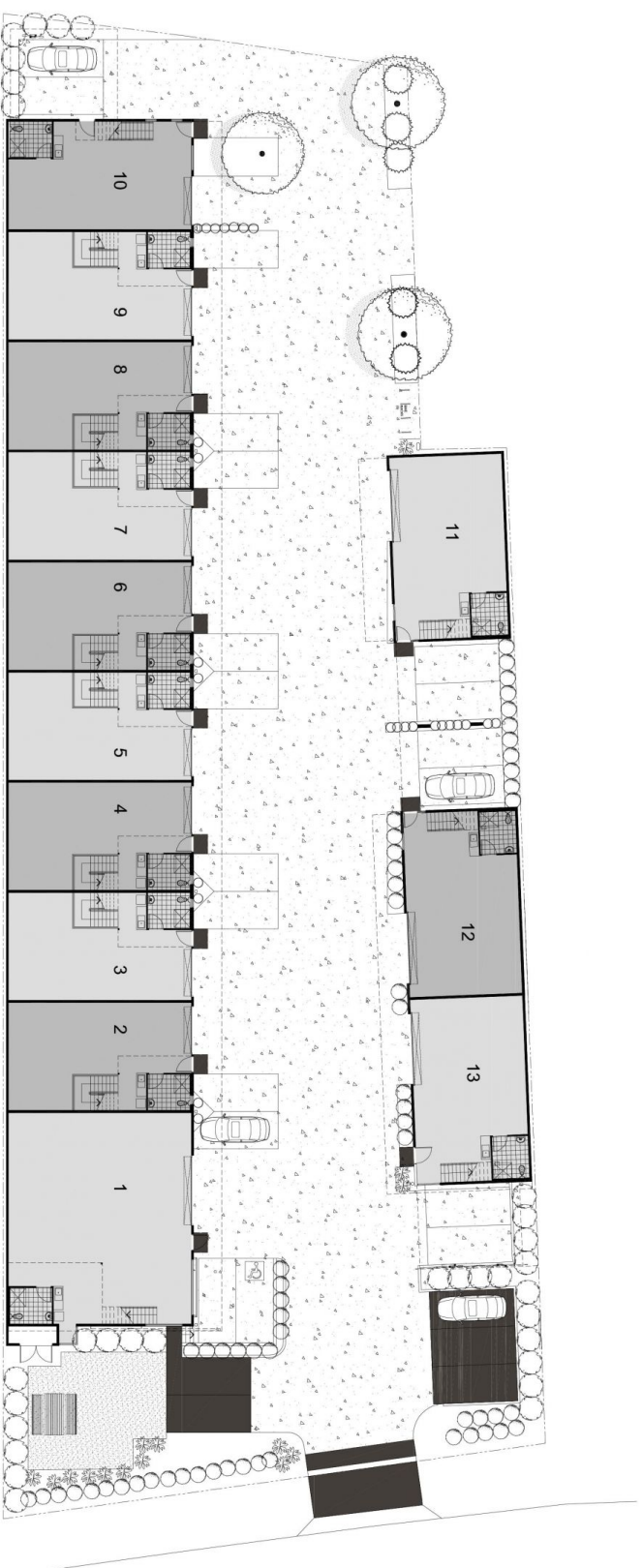
**2** 

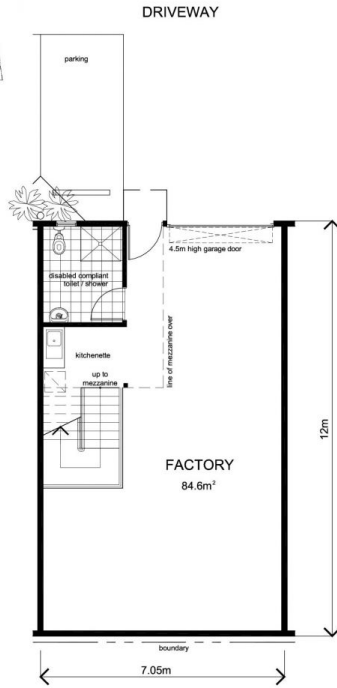
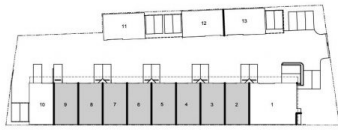
- \* Secure complex, electronic access
- \* High clearance roof and roller door
- \* Mezzanine office space
- \* Modern facilities
- \* Long lease available
- \* Clean workspace

**Type** : Industrial  
**Building Size** : 104 sqm  
**Land Size** : 2903 sqm  
**View** : <https://www.whkcommercial.com.au/lease/nsw/wollongong-illawarra/north-wollongong/commercial/industrial/8069917>



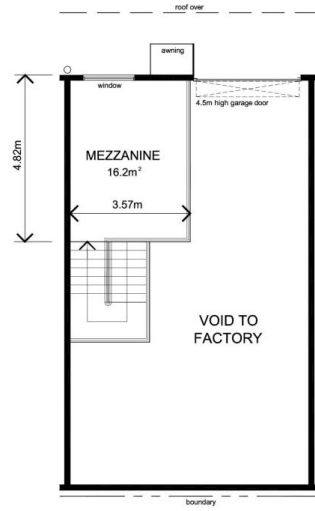
**Mark Marinelli**  
02 4229 6640





**GROUND FLOOR PLAN**

UNITS 3, 5, 7 & 9 AS DRAWN  
UNITS 2, 4, 6 & 8 MIRRORRED



**MEZZANINE FLOOR PLAN**

UNITS 3, 5, 7 & 9 AS DRAWN  
UNITS 2, 4, 6 & 8 MIRRORRED



U2-9