

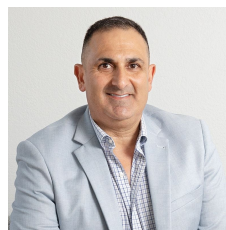


388 Crown Street Wollongong NSW

8 

- * Approx 290 sqm Retail Space
- * 70 sqm Office/Mezzanine
- * Off street parking for approx. 8 cars
- * Excellent signage rights
- * Owner willing to offer leasing incentives

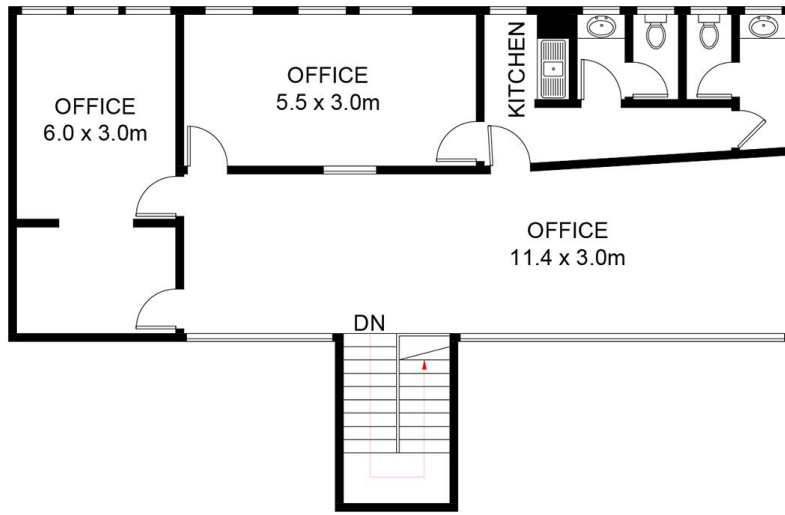
Type : Retail
Building Size : 380 sqm
Land Size : 613 sqm
View : <https://www.whkcommercial.com.au/lease/nsw/wollongong-illawarra/wollongong/commercial/retail/8069926>



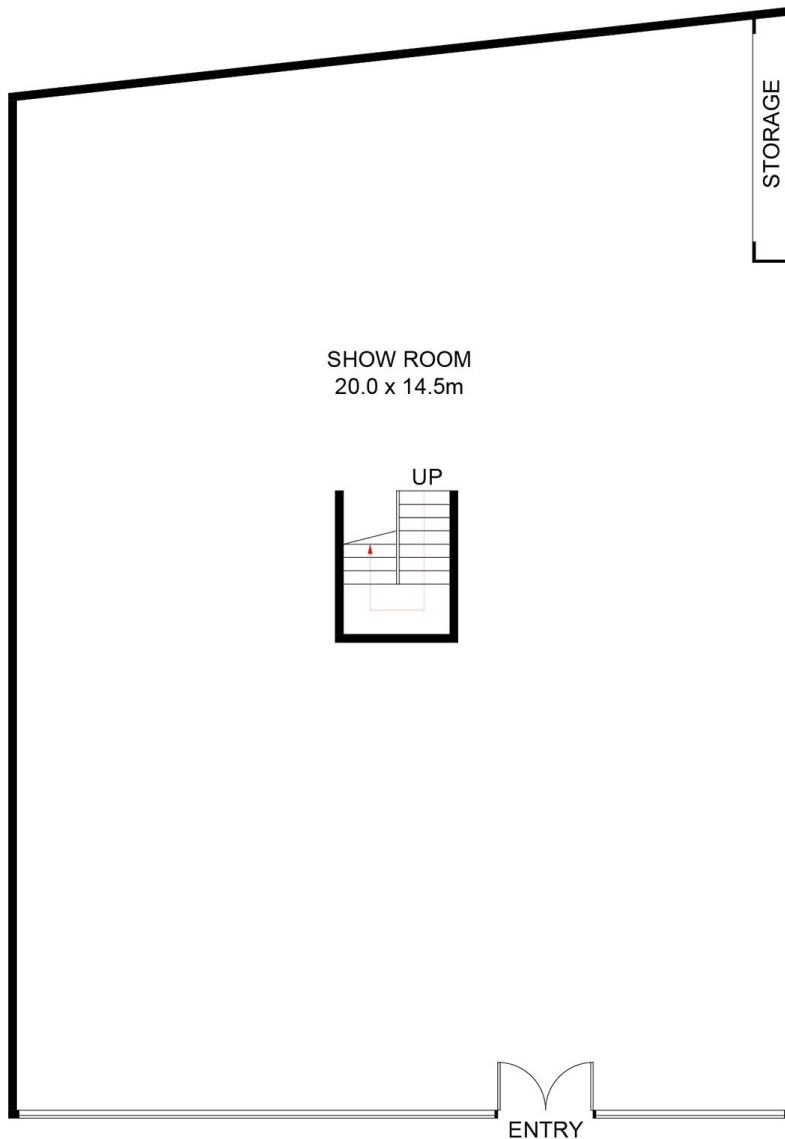
Harry Stefanou
02 4229 6640



Mark Marinelli
02 4229 6640



Mezzanine



GROUND FLOOR



388 Crown Street, Wollongong

Approximate Gross Internal Area (Including Mezzanine) = 380.6 sq m

Scale in metres. Indicative only. Dimensions are approximate. All information contained herein is gathered from sources

we believe to be reliable. However, we cannot guarantee its accuracy and interested persons should rely on their own enquiries. Some images may contain digital furniture.