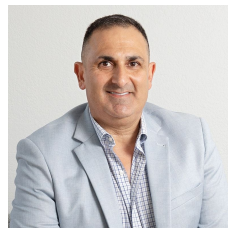


**Suite 1/429 - 433 Princes Highway Corrimal NSW**

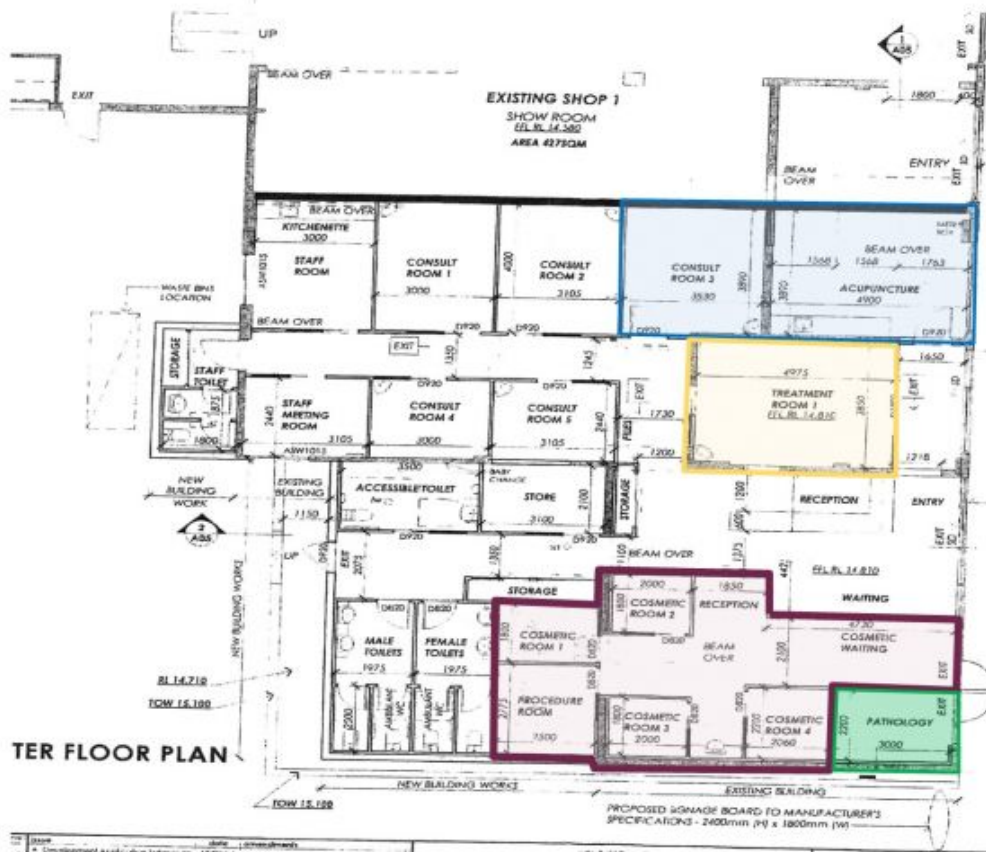
- \* Opportunity for practitioner to join well established Medical Centre
- \* Great location with supporting medical services located close by
- \* Range of services existing within centre including Pathology and Cosmetic services
- \* Access to shared reception - Full use and access to amenities, kitchen and staff rooms
- \* Suite 1 - 32.79 sqm \$800 per week + GST

<b>Type</b>	: Healthcare
<b>Price</b>	: \$800 + GST pw
<b>Building Size</b>	: 32.79 sqm
<b>View</b>	: <a href="https://www.whkcommercial.com.au/lease/nsw/wollongong-illawarra/corrimal/commercial/healthcare/8069976">https://www.whkcommercial.com.au/lease/nsw/wollongong-illawarra/corrimal/commercial/healthcare/8069976</a>



**Harry Stefanou**  
02 4229 6640

[For full version visit the website](https://www.whkcommercial.com.au)



- Medical suite 1
- Medical suite 2
- Cosmetic Suites 1
- Pathology Room