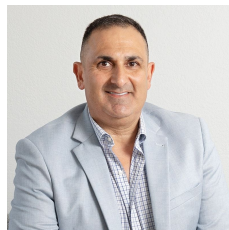




### 378 Crown Street Wollongong NSW

- \* Ideal opportunity for small office or retail tenant
- \* 130 sqm office space - multiple offices with reception area
- \* High exposure location with great passer by traffic
- \* Includes kitchen and bathroom amenities
- \* Excellent off-street private parking for staff and visitors
- \* Available from September 2022

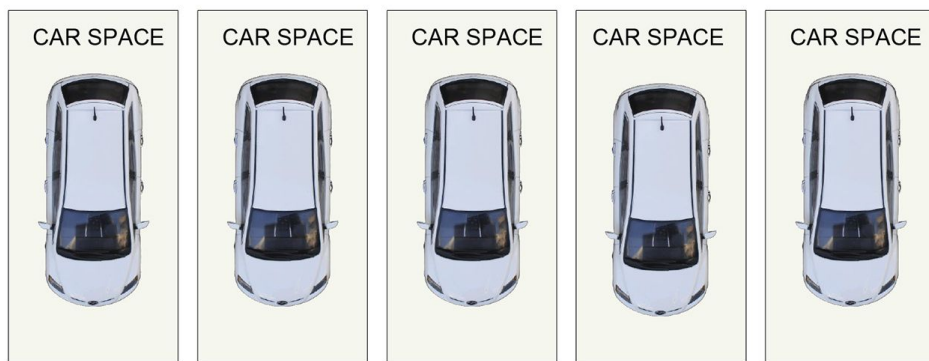
**Type** : Offices  
**Building Size** : 130 sqm  
**Land Size** : 639 sqm  
**View** : <https://www.whkcommercial.com.au/lease/nsw/wollongong-illawarra/wollongong/commercial/offices/8069992>



**Harry Stefanou**  
02 4229 6640



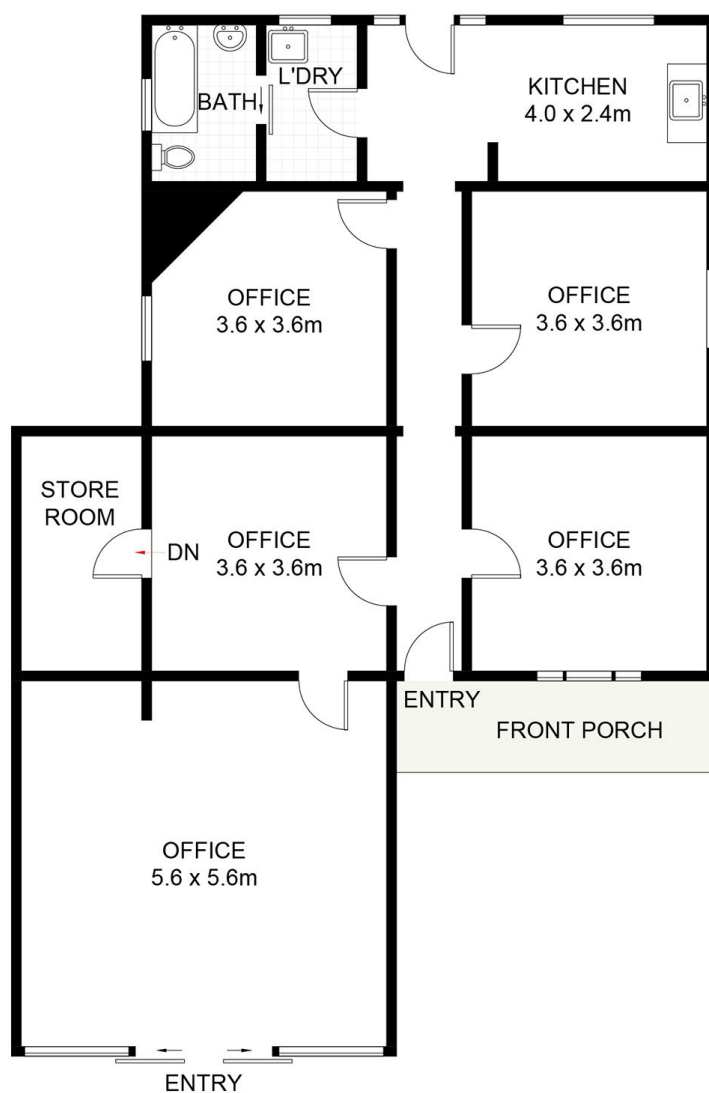
**Mark Marinelli**  
02 4229 6640



(NOT SHOWN IN ACTUAL  
LOCATION / ORIENTATION)



(NOT SHOWN IN ACTUAL  
LOCATION / ORIENTATION)



## 378 Crown Street, Wollongong

Approximate Gross Internal Area = 123.8 sq m (Excluding Car Space)

Scale in metres. Indicative only. Dimensions are approximate. All information contained herein is gathered from sources

we believe to be reliable. However, we cannot guarantee its accuracy and interested persons should rely on their own enquiries. Some images may contain digital furniture.