

9 First Avenue Unanderra NSW

2 

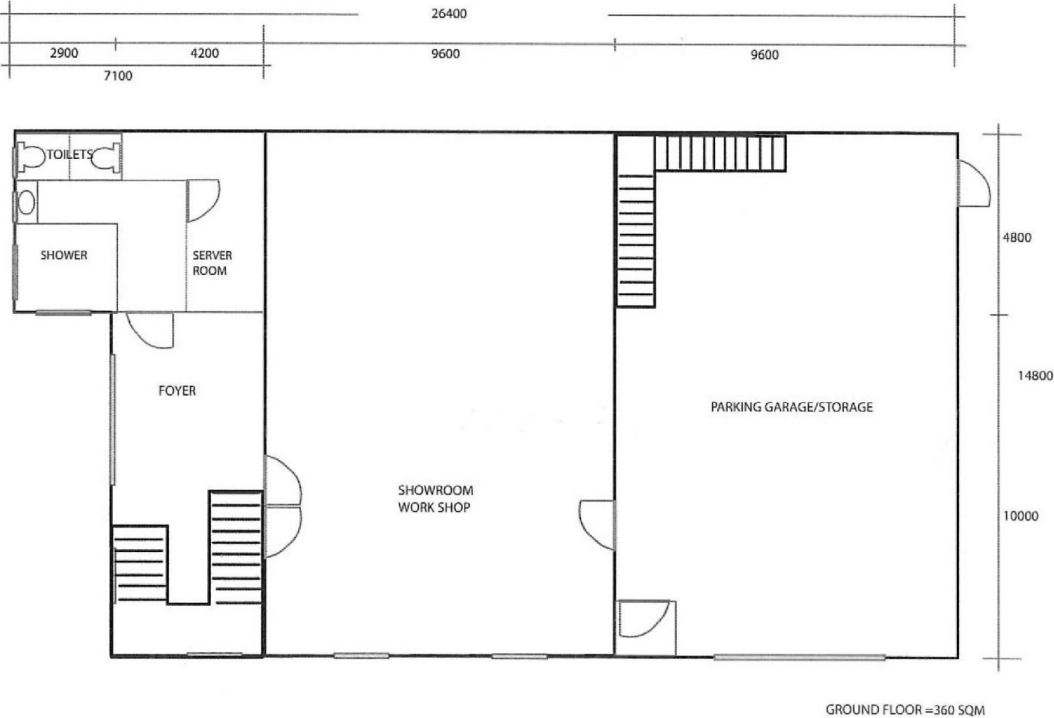
- * Princes Highway exposure
- * Located in Unanderra CBD
- * Consisting of Warehouse + Large Modern office spaces
- * Would suit multiple uses
- * Includes truck access and loads of space
- * Professional open plan office set up
- * 10KW solar panel system on roof
- * Modern Reception area
- * 2 x car spaces at front of property
- * Abundant street parking in area

Type : Industrial
Building Size : 720 sqm
Land Size : 720 sqm
View : <https://www.whkcommercial.com.au/lease/nsw/wollongong-illawarra/unanderra/commercial/industrial/8070001>



Tony Moschella
02 4229 6640

DGS 9 FIRST AVE, UNANDERRA
GROUND FLOOR



DGS 9 FIRST AVE, UNANDERRA
TOP FLOOR

