

8/46 Montague Street North Wollongong NSW

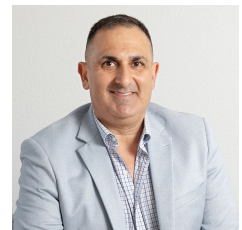
2 

- * Secure complex, electronic access
- * High clearance roof and roller door
- * Mezzanine office space
- * Modern facilities
- * Long lease available
- * Clean workspace

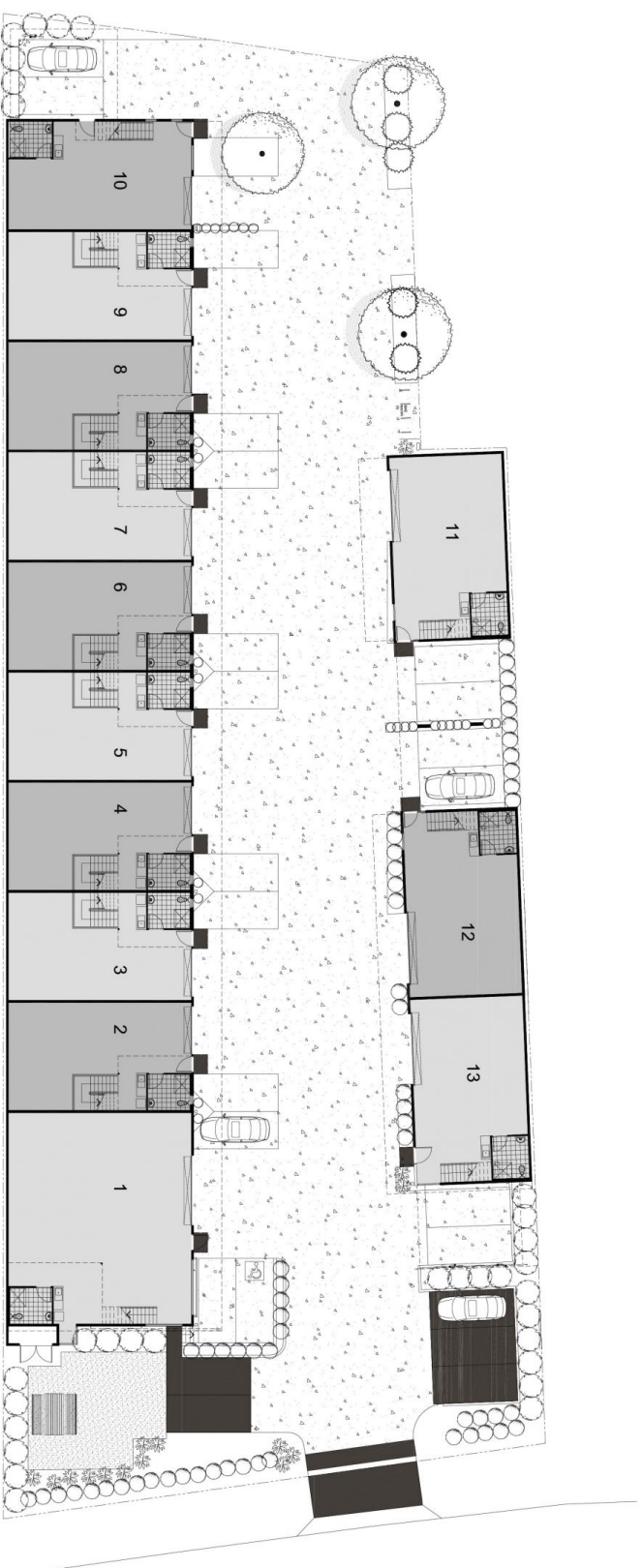
Type : Industrial
Building Size : 104 sqm
View : <https://www.whkcommercial.com.au/lease/nsw/wollongong-illawarra/north-wollongong/commercial/industrial/8070011>

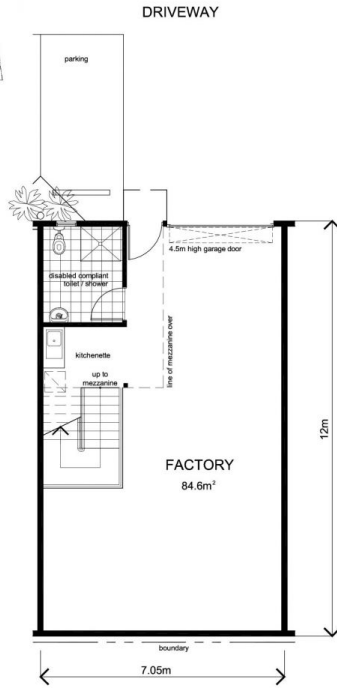
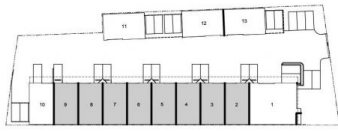


Mark Marinelli
02 4229 6640



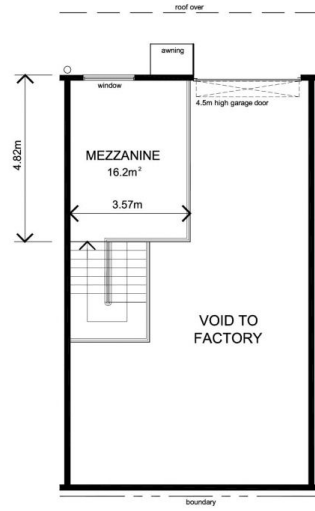
Harry Stefanou
02 4229 6640





GROUND FLOOR PLAN

UNITS 3, 5, 7 & 9 AS DRAWN
UNITS 2, 4, 6 & 8 MIRRORRED



MEZZANINE FLOOR PLAN

UNITS 3, 5, 7 & 9 AS DRAWN
UNITS 2, 4, 6 & 8 MIRRORRED



U2-9