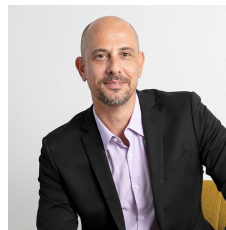


3/110 - 112 Princes Highway Albion Park Rail NSW

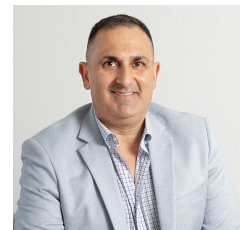
2 

- * Located in the heart of Albion Park Rail Industrial Hub
- * 260 sqm warehouse/showroom space + 65 sqm office
- * Rear roller door with high clearance
- * Dual frontage on Princes Highway and Hargraves Rd
- * Office space carpeted with Air Conditioning
- * 2 Undercover car spaces at rear

Type : Industrial
Building Size : 325 sqm
Land Size : 325 sqm
View : <https://www.whkcommercial.com.au/lease/nsw/wollongong-illawarra/albion-park-rail/commercial/industrial/8070029>

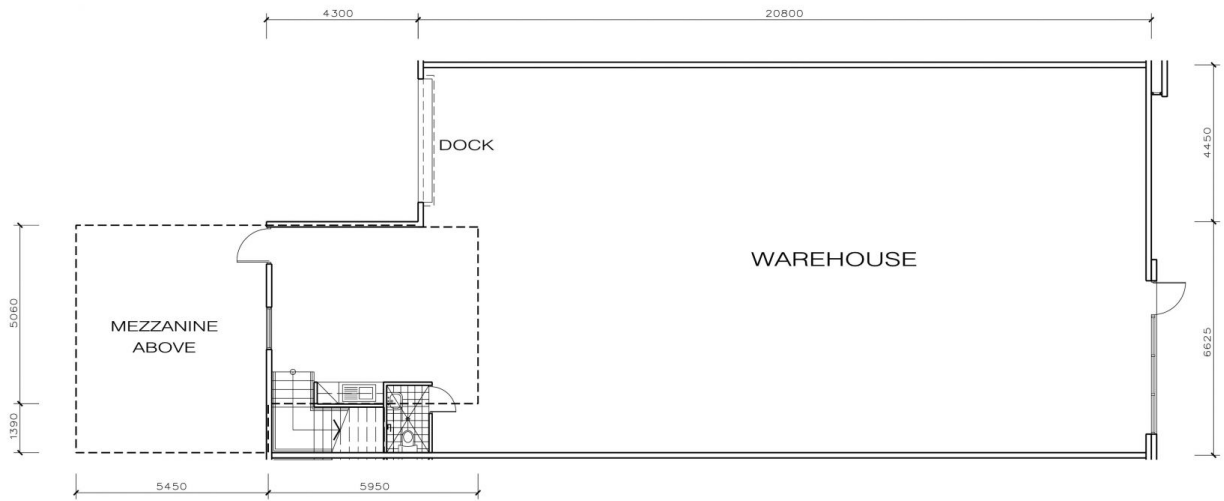


Mark Marinelli
02 4229 6640



Harry Stefanou
02 4229 6640

AIRPORT CENTRAL
110 PRINCES HIGHWAY, ALBION PARK



Unit No.

3

Warehouse Area - 260 sqm

Mezzanine Area - 65 sqm

Total - 325 sqm

No. of car spaces - 3 cars

