

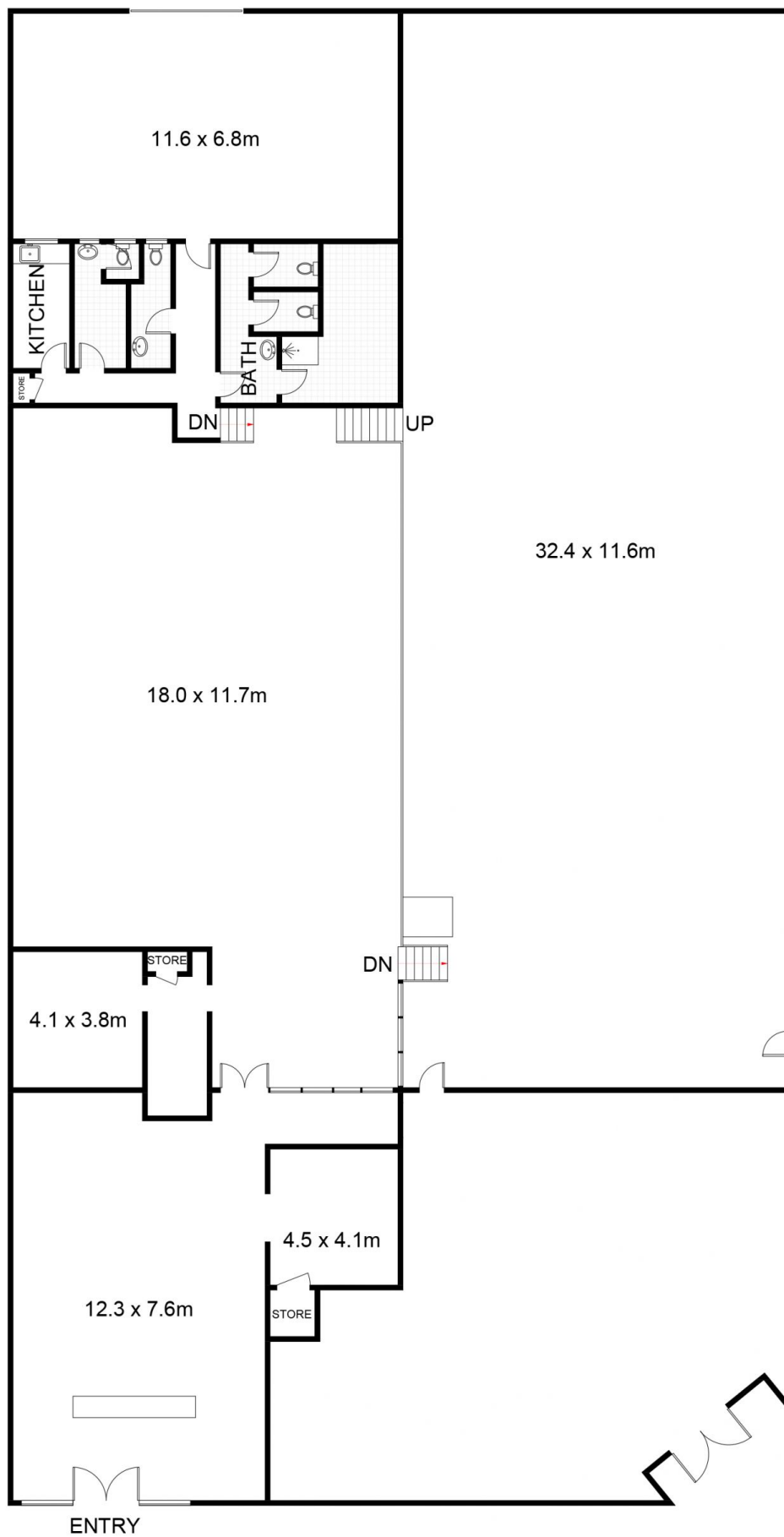
**Warehouse/141-147 Wentworth Street Port Kembla NSW**

- \* Great combination of Retail and Warehouse spaces available
- \* Ideal for Retail / Bulky Goods requiring large warehouse space
- \* Overall area is approximately 900 sqm
- \* Retail space fronts Wentworth Street which connects to rear warehouse
- \* Current Retail space can be expanded into rear warehouse
- \* Warehouse space has dual roller door access from Fitzwilliam Street
- \* Includes 3 phase power.

<b>Type</b>	: Industrial
<b>Building Size</b>	: 880 sqm
<b>Land Size</b>	: 1112 sqm
<b>View</b>	: <a href="https://www.whkcommercial.com.au/lease/nsw/wollongong-illawarra/port-kembla/commercial/industrial/8070079">https://www.whkcommercial.com.au/lease/nsw/wollongong-illawarra/port-kembla/commercial/industrial/8070079</a>



**Tony Moschella**  
02 4229 6640



## 141-147 Wentworth Street, Port Kembla

Approximate Gross Internal Area = 1036.4 sq m

Scale in metres. Indicative only. Dimensions are approximate. All information contained herein is gathered from sources we believe to be reliable. However, we cannot guarantee its accuracy and interested persons should rely on their own enquiries. Some images may contain digital furniture.