



46/7 Waynote Place Unanderra NSW

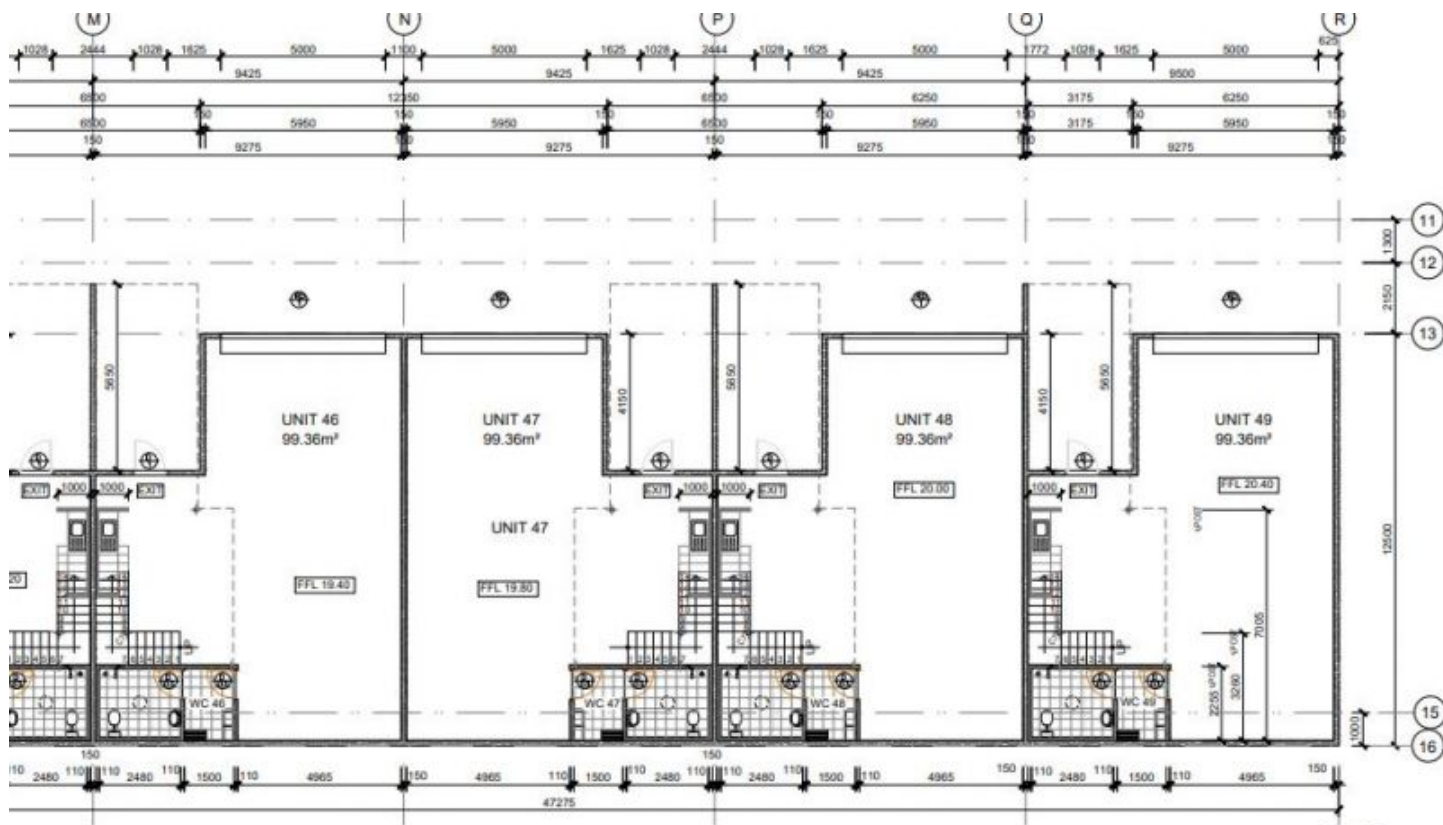


- * Near NEW concrete Panel High Clearance Warehouse - total 148m2
- * Approx 100 sqm warehouse + 48 sqm mezzanines offices
- * Extra high and wide Automatic Roller Door
- * NBN and 3 phase Power
- * Modern open plan office spaces
- * Kitchenette and amenities
- * Located in Premium Business Park with Secured access
- * Abundance of visitor car parking.
- * On-site Cafe
- * NOT available until December 2023

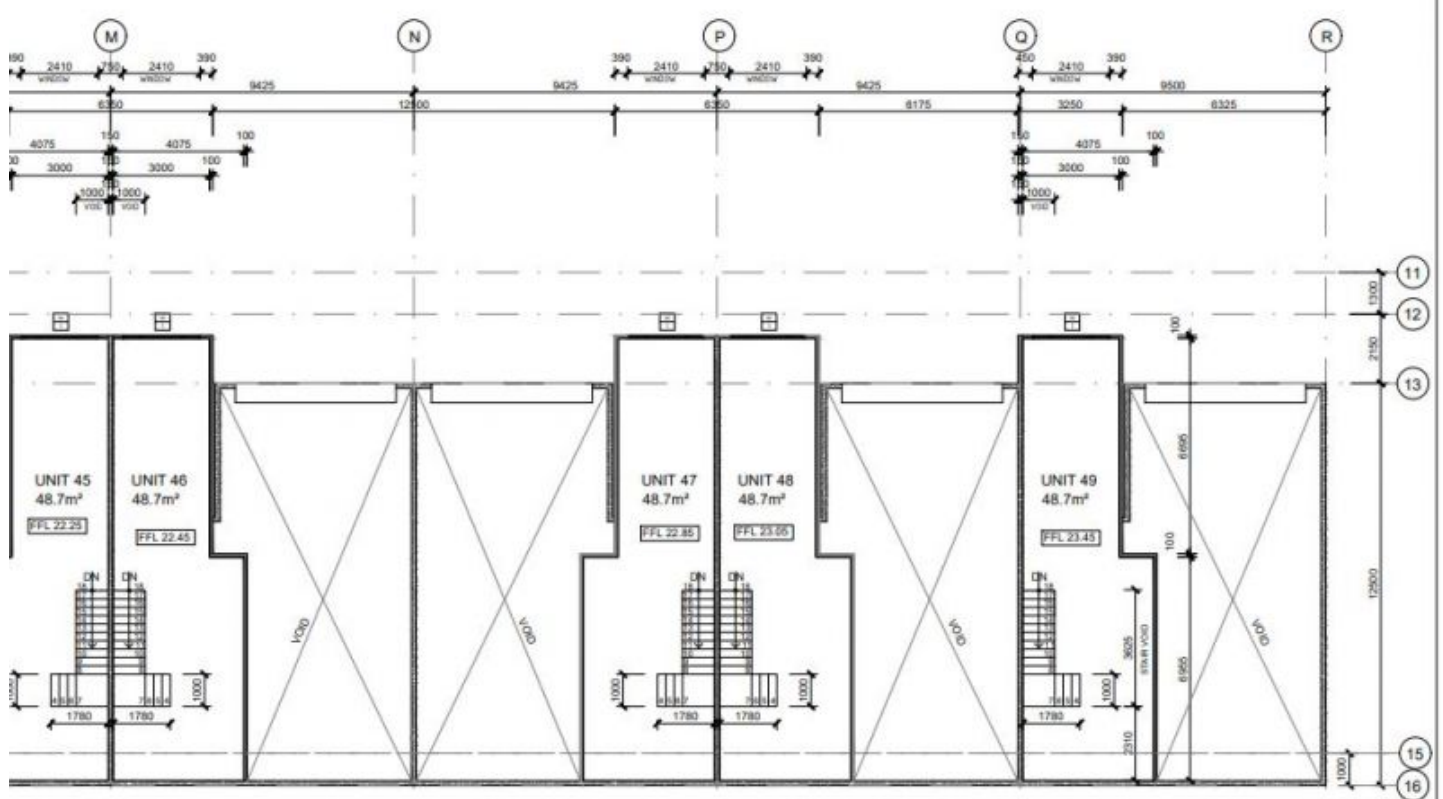
Type : Industrial
Building Size : 148 sqm
View : <https://www.whkcommercial.com.au/lease/nsw/wollongong-illawarra/unanderra/commercial/industrial/8070085>



Tony Moschella
02 4229 6640



35-49
GROUND
AREAS



35-49
MEZZNINE
AREAS