



**6/7 Waynote Place Unanderra NSW**

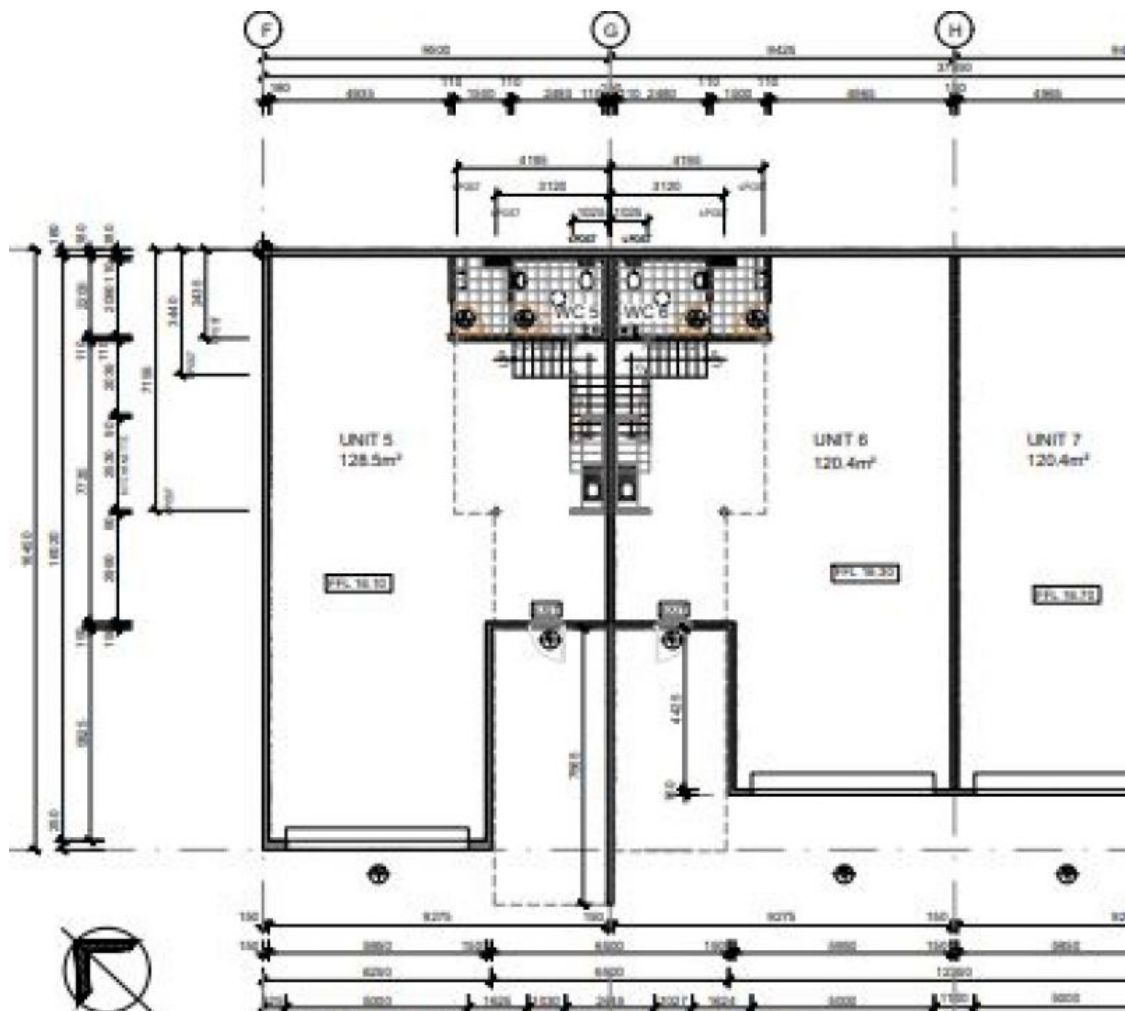


- \* Approx 118 sqm warehouse + 56 sqm mezzanine office (174sqm)
- \* As New warehouse in highly sort after gated complex
- \* Complex has over 50 visitor car spaces
- \* On site cafe in gated security access location
- \* Close to M1 motorway.
- \* Great truck access and extra high electric roller door
- \* Includes kitchenette, disabled toilet and shower
- \* Available Now

**Type** : Industrial  
**Building Size** : 174 sqm  
**View** : <https://www.whkcommercial.com.au/lease/nsw/wollongong-illawarra/unanderra/commercial/industrial/8070086>

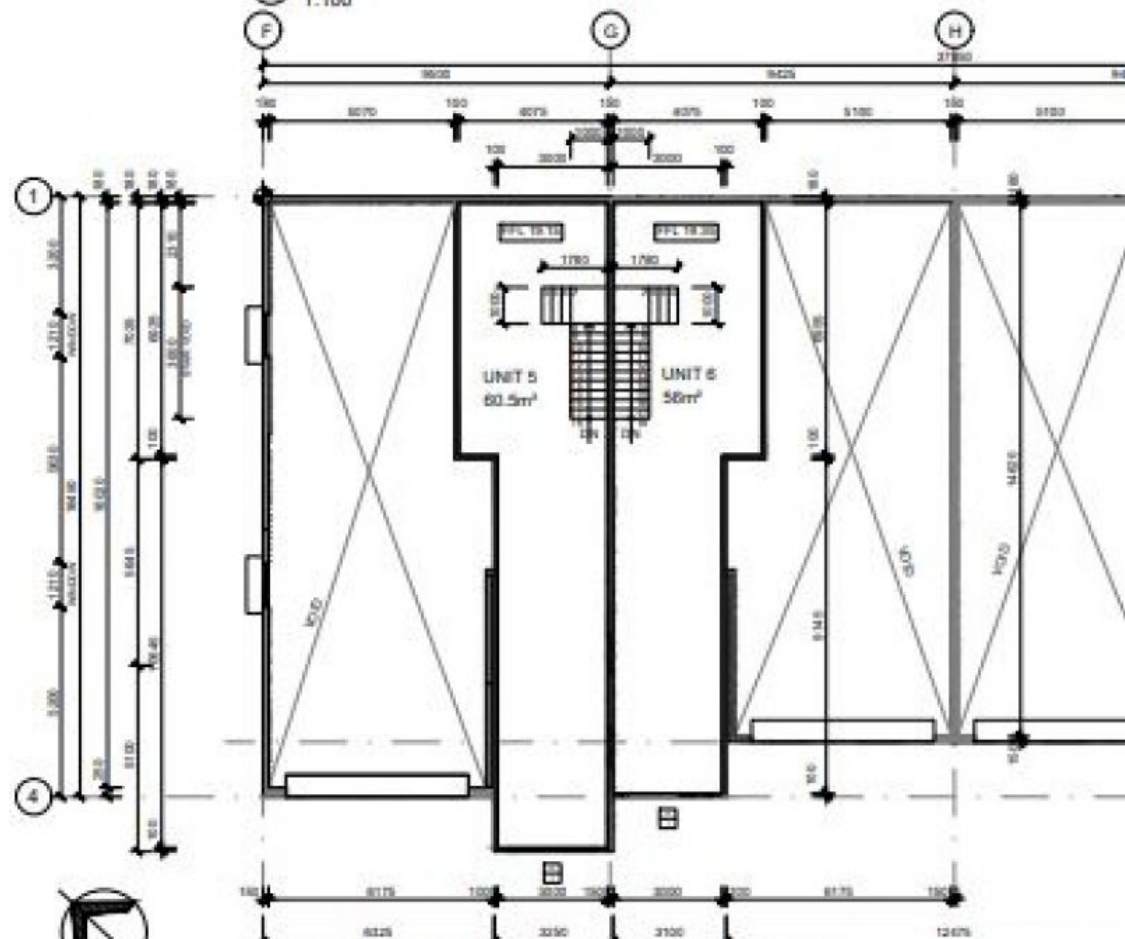


**Tony Moschella**  
02 4229 6640



GROUND FLOOR AREAS - UNITS 5 TO 10

1:100



MEZZANINE FLOOR AREAS - UNITS 5 TO 10

1:100