



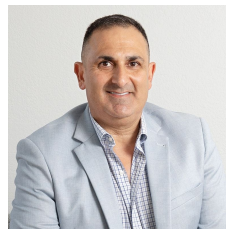
2/9-15 Ellen Street Wollongong NSW

11 

- * Flexible floorplan provides an ideal mix of Office-Retail-Showroom
- * Excellent exposure to passing traffic
- * 11 x car spaces available
- * 2 Large showrooms, perfect for retail trade
- * Formal reception area with support desk + storage
- * 3 Large offices with open floorplan including work stations
- * 2 large meeting rooms, Air-conditioned premises, wheelchair friendly
- * Storage rooms, lunchroom, wheelchair accessible bathroom amenities

Type : Showrooms/Bulky Goods

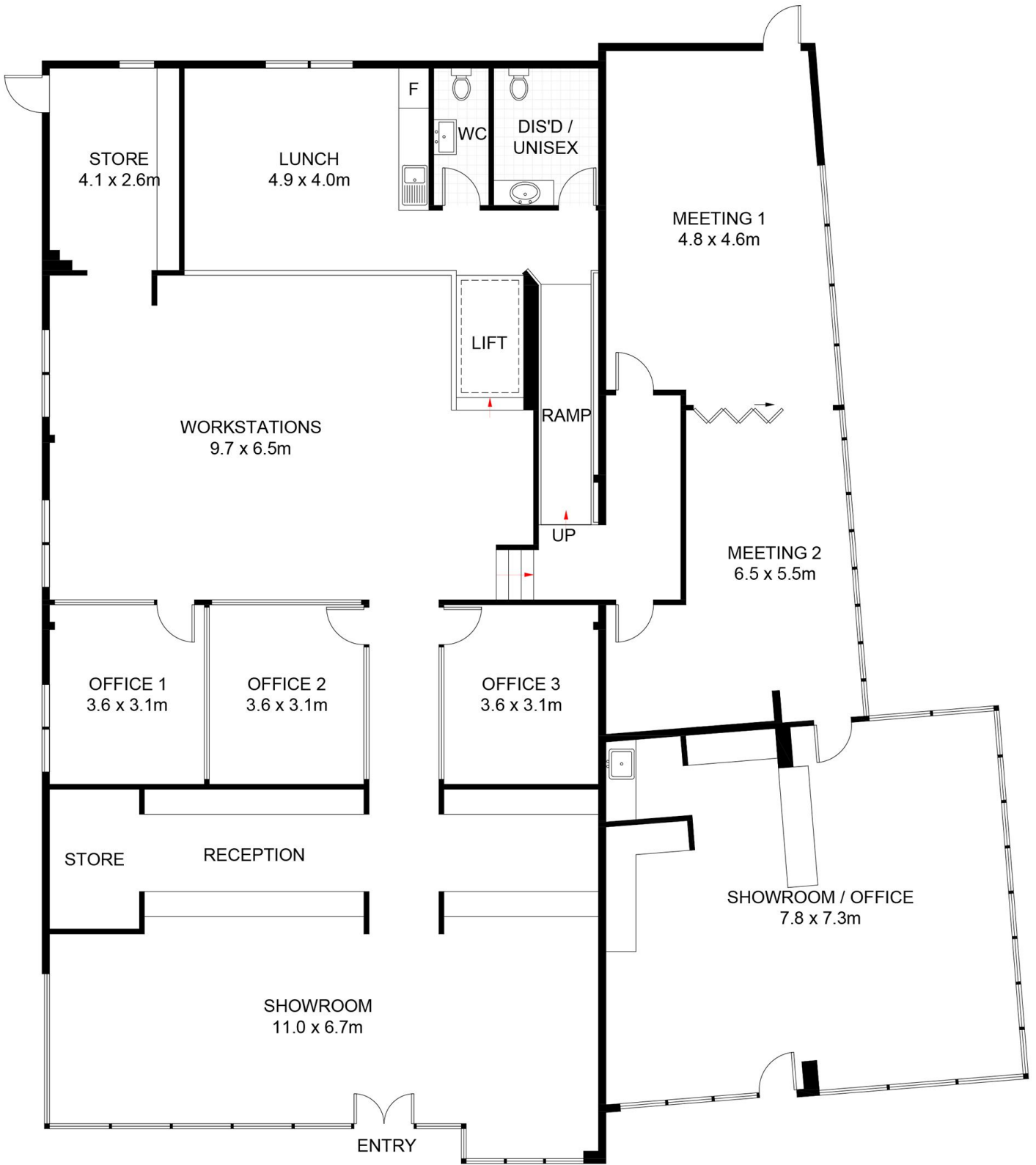
View : <https://www.whkcommercial.com.au/lease/nsw/wollongong-illawarra/wollongong/commercial/showroomsbulky-goods/8070099>



Harry Stefanou
02 4229 6640



Mark Marinelli
02 4229 6640



2/9-15 Ellen Street, Wollongong

Approximate Gross Internal Area = 359.9 sq m

Scale in metres. Indicative only. Dimensions are approximate. All information contained herein is gathered from sources

we believe to be reliable. However, we cannot guarantee its accuracy and interested persons should rely on their own enquiries. Some images may contain digital furniture.