

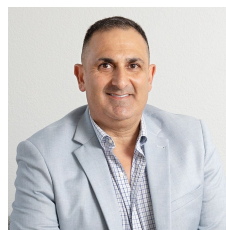


2/21 Doyle Avenue Unanderra NSW



- * Warehouse 115m² - Mezzanine 81m² (Total 196m²)
- * Modern Tilt - Up Concrete Design
- * High Clearance roller doors with higher internal clearance
- * Secure fence and electric gated complex
- * Multiple car spaces per unit with ample visitor parking
- * Good vehicle access
- * Close proximity to major arterial roads
- * Located in the industrial and commercial hub of Unanderra
- * 90 mins to Sydney / 10 Mins to Wollongong / 5 mins to Port Kembla

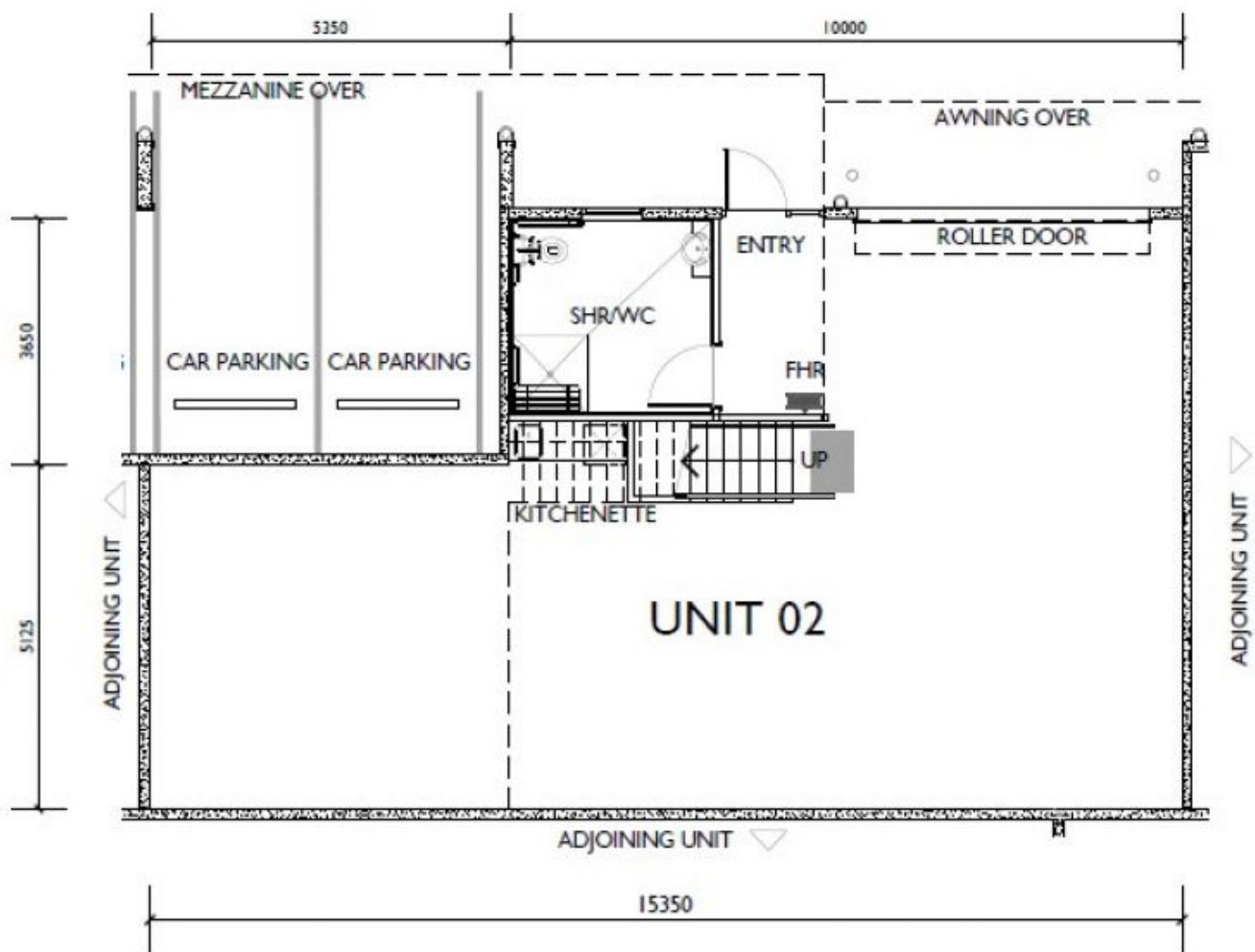
| | |
|----------------------|---|
| Type | : Industrial |
| Price | : \$44,950 + GST + OGS pa |
| Building Size | : 196 sqm |
| View | : https://www.whkcommercial.com.au/lease/nsw/wollongong-illawarra/unanderra/commercial/industrial/8070113 |



Harry Stefanou
02 4229 6640

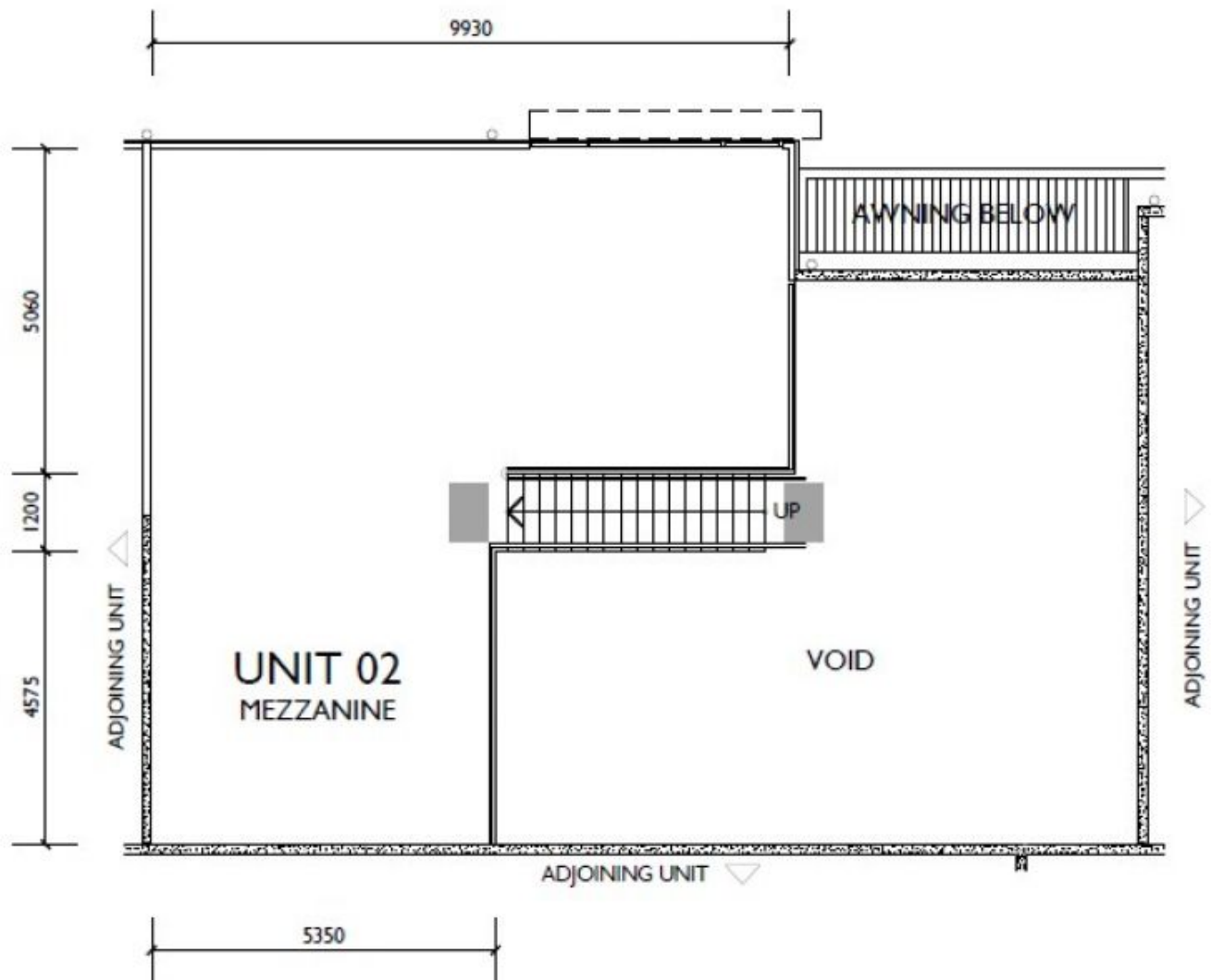


Elena Koroleva
02 4229 6640



UNIT 02 - GROUND FLOOR PLAN
19 - 23 DOYLE AVENUE, UNANDERRA
LIGHT INDUSTRIAL UNITS

note - these drawings are to be used for marketing purposes only. Layout may change at owners discretion. © copyright admarchitects 2023
 - areas subject to strata plan



UNIT 02 - MEZZANINE PLAN
19 - 23 DOYLE AVENUE, UNANDERRA
LIGHT INDUSTRIAL UNITS



note - these drawings are to be used for marketing purposes only. Layout may change at owners discretion. © copyright admarchitects 2023
 - areas subject to strata plan