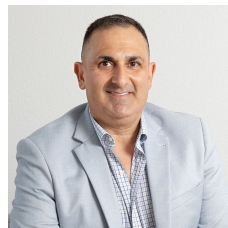


3/10-12 Sylvester Avenue Unanderra NSW

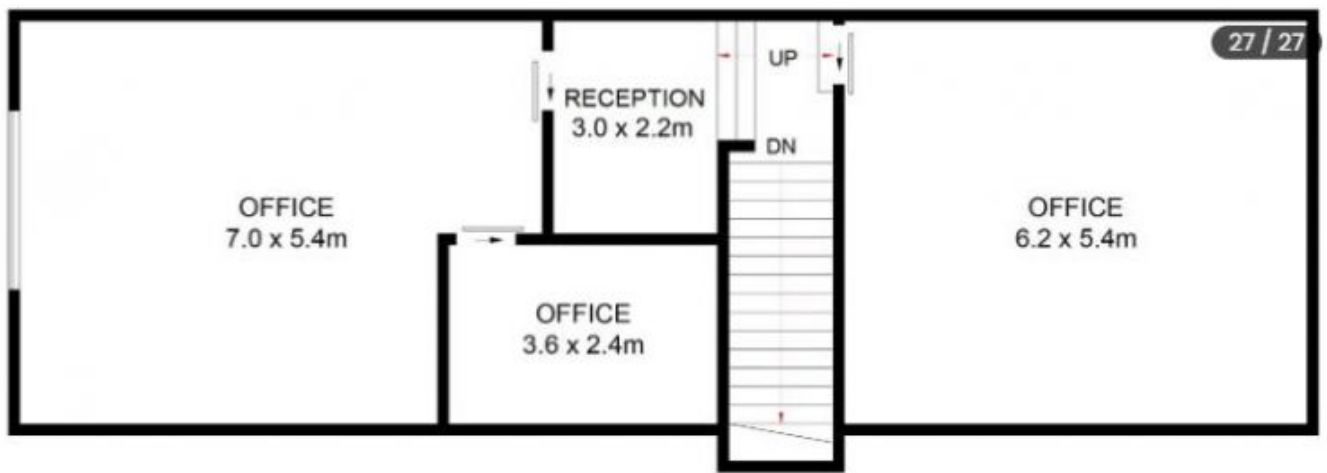
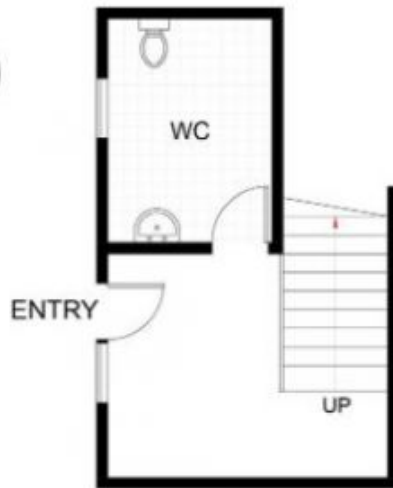
2 

- * 96 sqm warehouse and 86 sqm office approximately
- * Fully fenced and secure complex
- * Dual street frontages - Sylvester Avenue & Princes Highway
- * Modern tilt up concrete panel construction
- * 2 undercover car spaces, NBN and access to three phase power
- * Potential to remove additional office space to expand height clearance and warehouse size - subject to terms and conditions

Type : Industrial
Building Size : 182 sqm
View : <https://www.whkcommercial.com.au/lease/nsw/wollongong-illawarra/unanderra/commercial/industrial/8070129>



Harry Stefanou
02 4229 6640

**UPPER LEVEL****ENTRY LEVEL**

(NOT SHOWN IN ACTUAL
LOCATION / ORIENTATION)

3/10 Sylvester Avenue, Unanderra