

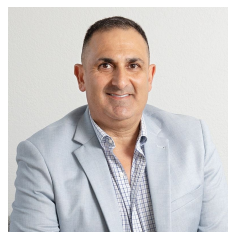


**1/122 - 126 Montague Street North Wollongong NSW**

- \* 500 sqm Warehouse and 90 sqm Mezzanine
- \* Modern Concrete Tilt Up Design inclusive of kitchenette and bathroom amenities.
- \* Ample parking on site with good truck manoeuvrability, access, and close to all major arterial roads
- \* Would suit multiple business uses, Zoned E4 - General Industrial, encompassing General & Light Industrial Usage
- \* Highly sought after location in North Wollongong Commercial/Industrial Precinct

[For full version visit the website](https://www.whkcommercial.com.au/lease/nsw/wollongong-illawarra/north-wollongong/commercial/industrial/8070141)

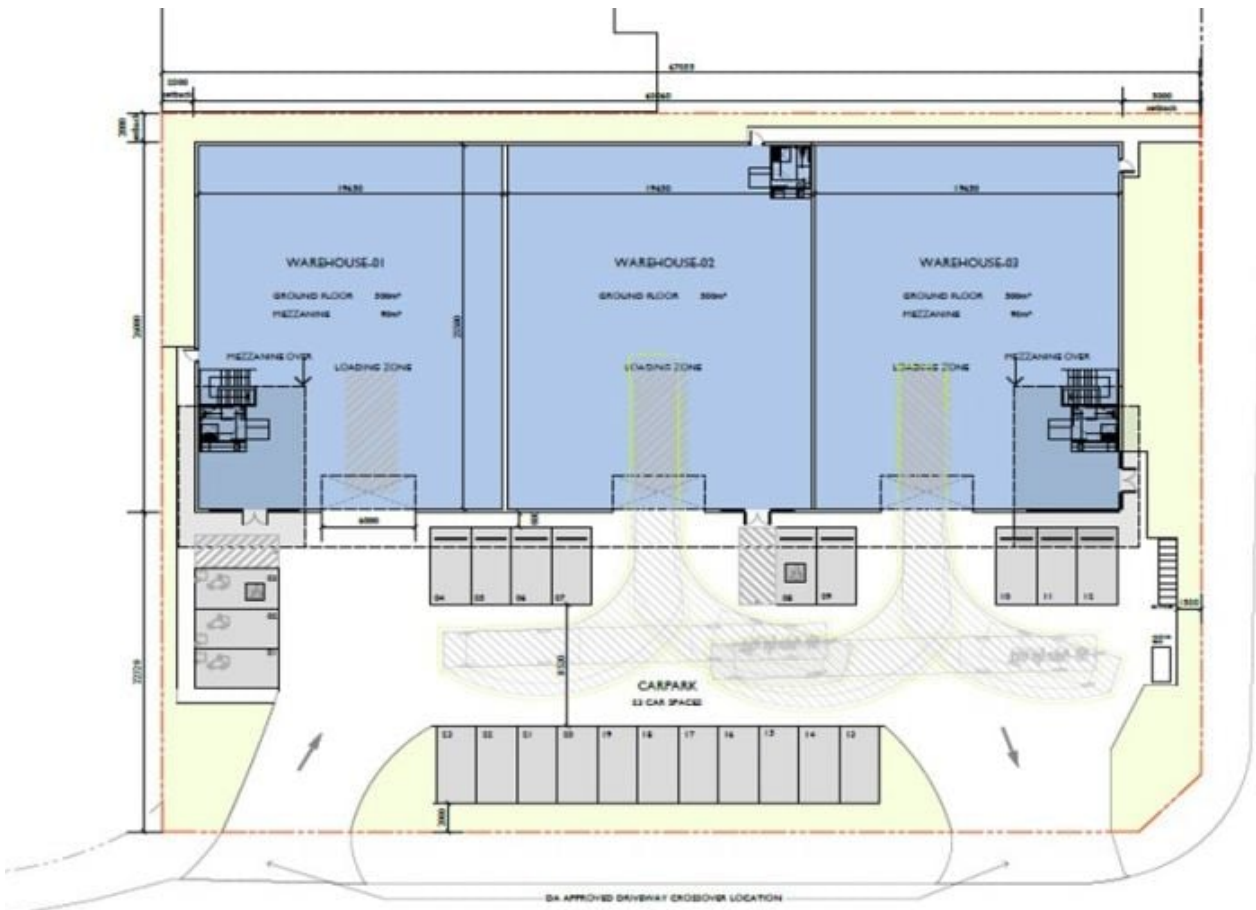
**Type** : Industrial  
**Price** : Contact Agent pa  
**Building Size** : 590 sqm  
**Land Size** : 500 sqm  
**View** : <https://www.whkcommercial.com.au/lease/nsw/wollongong-illawarra/north-wollongong/commercial/industrial/8070141>



**Harry Stefanou**  
02 4229 6640



**Mark Marinelli**  
02 4229 6640



R A L P H   B L A C K   D R I V E

M O N T A G U E   S T R E E T

DA APPROVED DRIVEWAY CROSSOVER LOCATION