



2/122 - 126 Montague Street North Wollongong NSW

- * 500 sqm Warehouse with Kitchen & Bathroom amenities
- * Modern Concrete Tilt Up Design with ample parking
- * Good truck access and maneuverability with drive through access in a secure gated complex of three
- * Would suit multiple business uses, Zoned E4 - General Industrial, encompassing General & Light Industrial Usage
- * Highly sought after location in North Wollongong Commercial/Industrial Precinct

Type : Industrial
Price : Contact Agent
Building Size : 500 sqm
Land Size : 500 sqm
View : <https://www.whkcommercial.com.au/lease/nsw/wollongong-illawarra/north-wollongong/commercial/industrial/8070142>

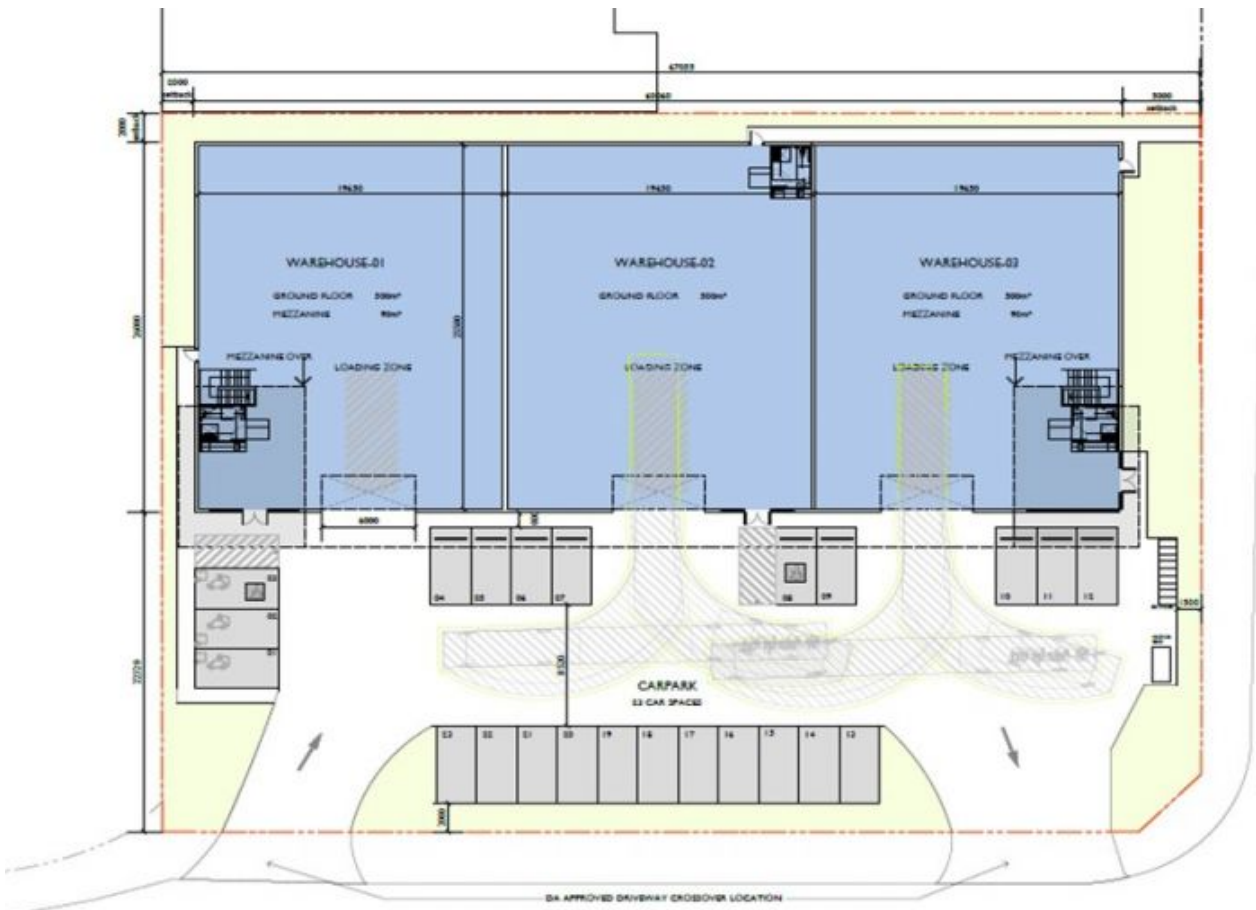


Harry Stefanou
02 4229 6640



Mark Marinelli
02 4229 6640

[For full version visit the website](https://www.whkcommercial.com.au)



RALPH BLACK DRIVE

MONTAGUE STREET

DA APPROVED DRIVEWAY CROSSOVER LOCATION

WAREHOUSE-01

WAREHOUSE-02

WAREHOUSE-03

GROUND FLOOR 399sqft

MEZZANINE 90sqft

GROUND FLOOR 399sqft

MEZZANINE 90sqft

GROUND FLOOR 399sqft

MEZZANINE 90sqft

MEZZANINE OVER

LOADING ZONE

LOADING ZONE

LOADING ZONE

MEZZANINE OVER

CARPARK

22 CAR SPACES

2000'

4750'

2000'

4750'

2000'

4000'

2000'

2000'

04

05

06

07

08

09

10

11

12

13

14

15

16

17

18

19

20

21

22

23

24

25