



3/122 - 126 Montague Street North Wollongong NSW

* Highly sought after location in North Wollongong Commercial/Industrial Precinct

* 500 sqm Warehouse & 90 sqm Mezzanine with Kitchen & Bathroom amenities

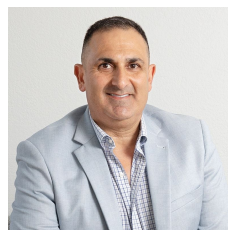
* Modern Concrete Tilt Up Design with ample parking and good truck access and maneuverability

* Drive through access within a secure gated complex of three

* Would suit multiple business uses, Zoned E4 - General

[For full version visit the website](https://www.whkcommercial.com.au)

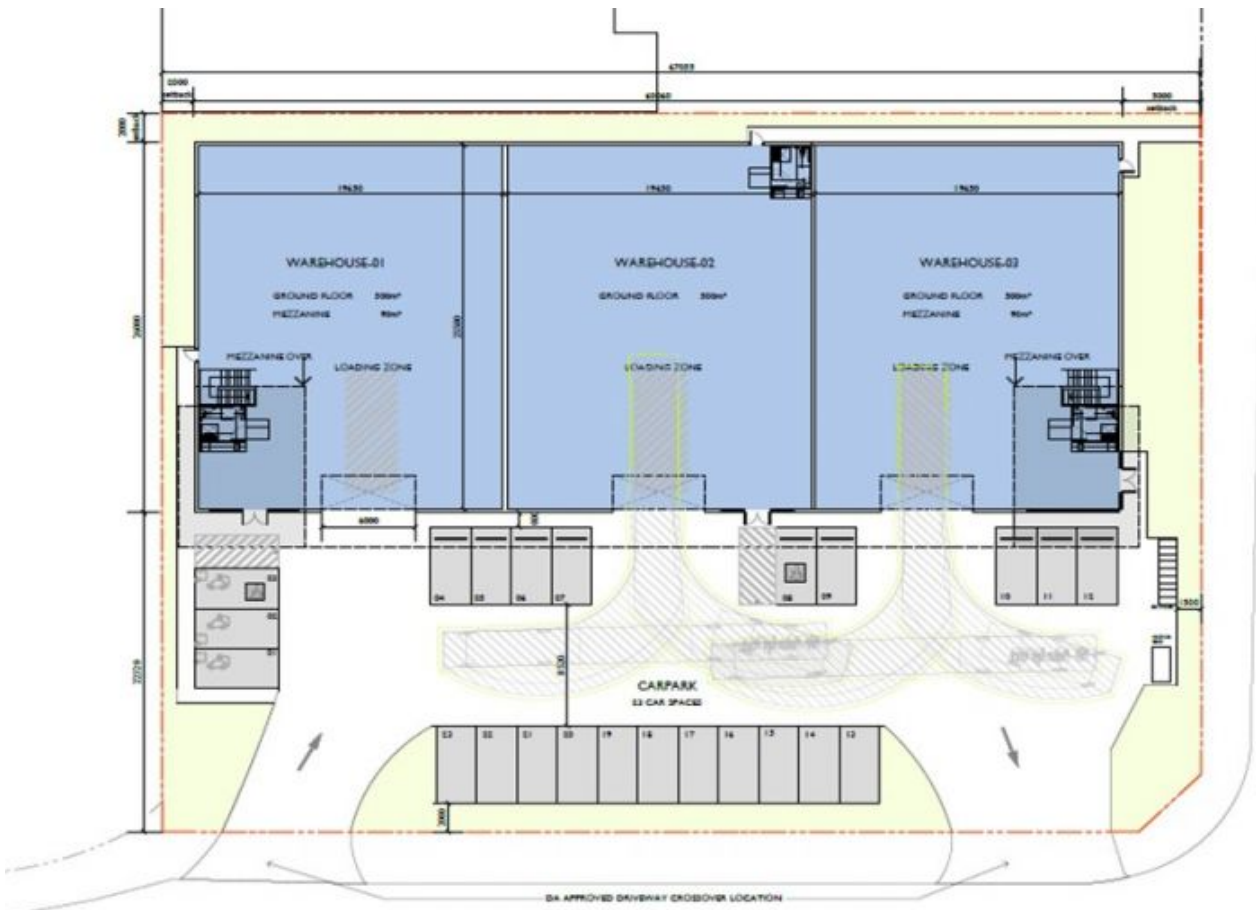
Type : Industrial
Price : Contact Agent
Building Size : 590 sqm
Land Size : 500 sqm
View : <https://www.whkcommercial.com.au/lease/nsw/wollongong-illawarra/north-wollongong/commercial/industrial/8070143>



Harry Stefanou
02 4229 6640



Mark Marinelli
02 4229 6640



RALPH BLACK DRIVE

MONTAGUE STREET

DA APPROVED DRIVEWAY CROSSOVER LOCATION