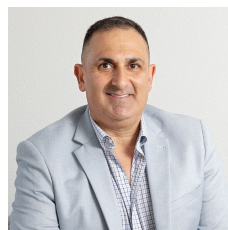


**Level GF/62 Burelli Street Wollongong NSW**

**3** 

- \* 249 sqm open plan, refurbished space
- \* Access via Simpson Lane
- \* Would suit multiple tenancies
- \* Reception Area access
- \* Access to male/female bathrooms kitchenette
- \* Excellent Retail Exposure
- \* Office / Retail / Hospitality Usage

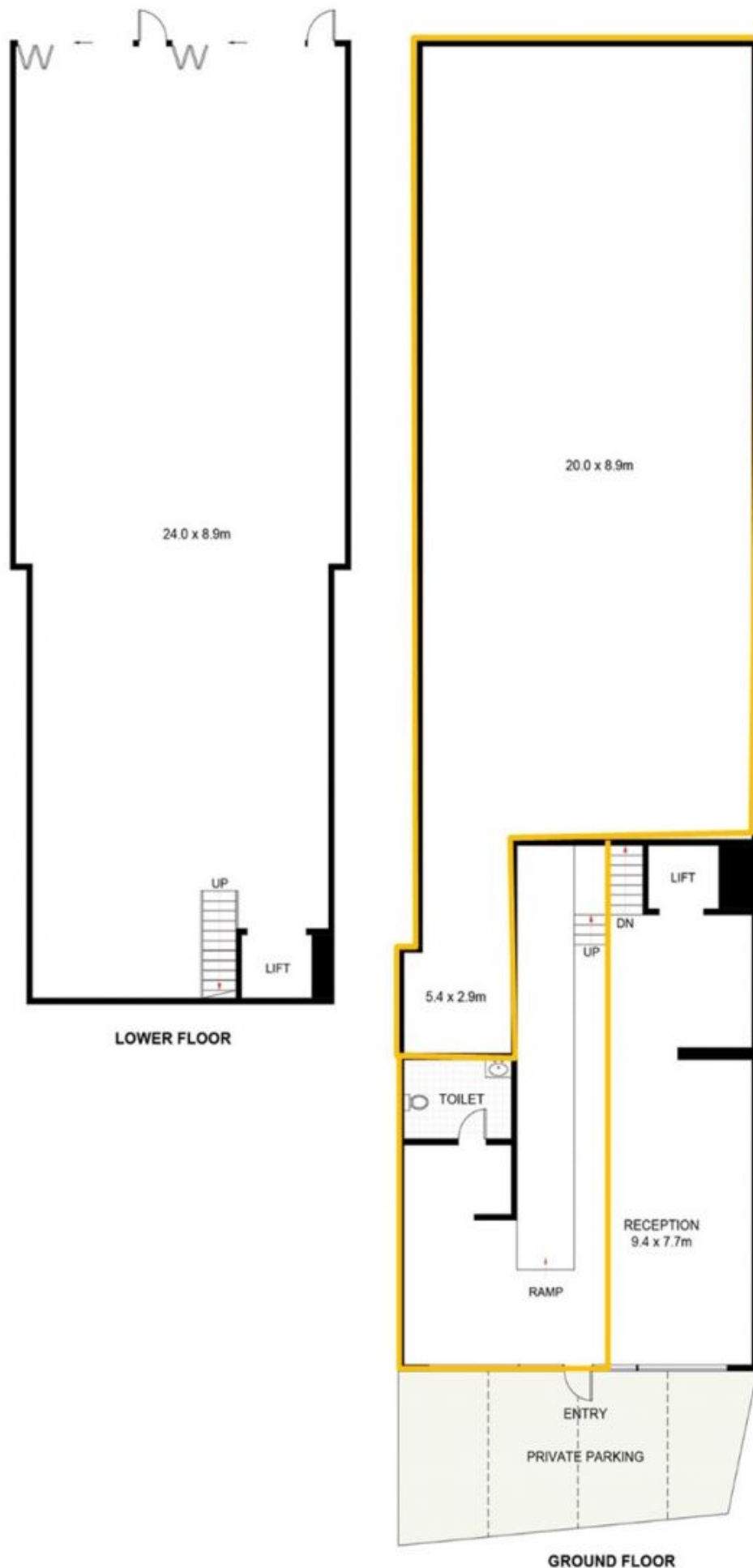
**Type** : Retail  
**Price** : \$55,000 + GST + OGS pa  
**Building Size** : 249 sqm  
**View** : <https://www.whkcommercial.com.au/lease/nsw/wollongong-illawarra/wollongong/commercial/retail/8089904>



**Harry Stefanou**  
02 4229 6640



**Elena Koroleva**  
02 4229 6640



## 62 Burelli Street, Wollongong

Approximate Gross Internal Area = 506.3 sq m

Scale in metres. Indicative only. Dimensions are approximate. All information contained herein is gathered from sources

we believe to be reliable. However, we cannot guarantee its accuracy and interested persons should rely on their own enquiries. Some images may contain digital furniture.