



Suites 1-4/41 Market Street Wollongong NSW

4 🚗

- * Options to Lease Part or Entire Ground Floor area
- * Ranging from 100 to 572sqm of Ground Floor Office Space
- * Potential to connect extra First Floor Units with Lift subject to terms
- * Includes full kitchen and amenities
- * Good Disabled Access
- * Adjacent to Court House and multi level Car Parking Station
- * Ample Street Parking and close proximity to Public Transport
- * Ideal for Medical, Legal, Accounting, Beauty, Consultancy, Treatment rooms and more

Type

: Offices

Price

: Price on application pa

Building Size

: 572 sqm

Land Size

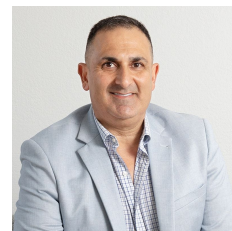
: 879 sqm

View

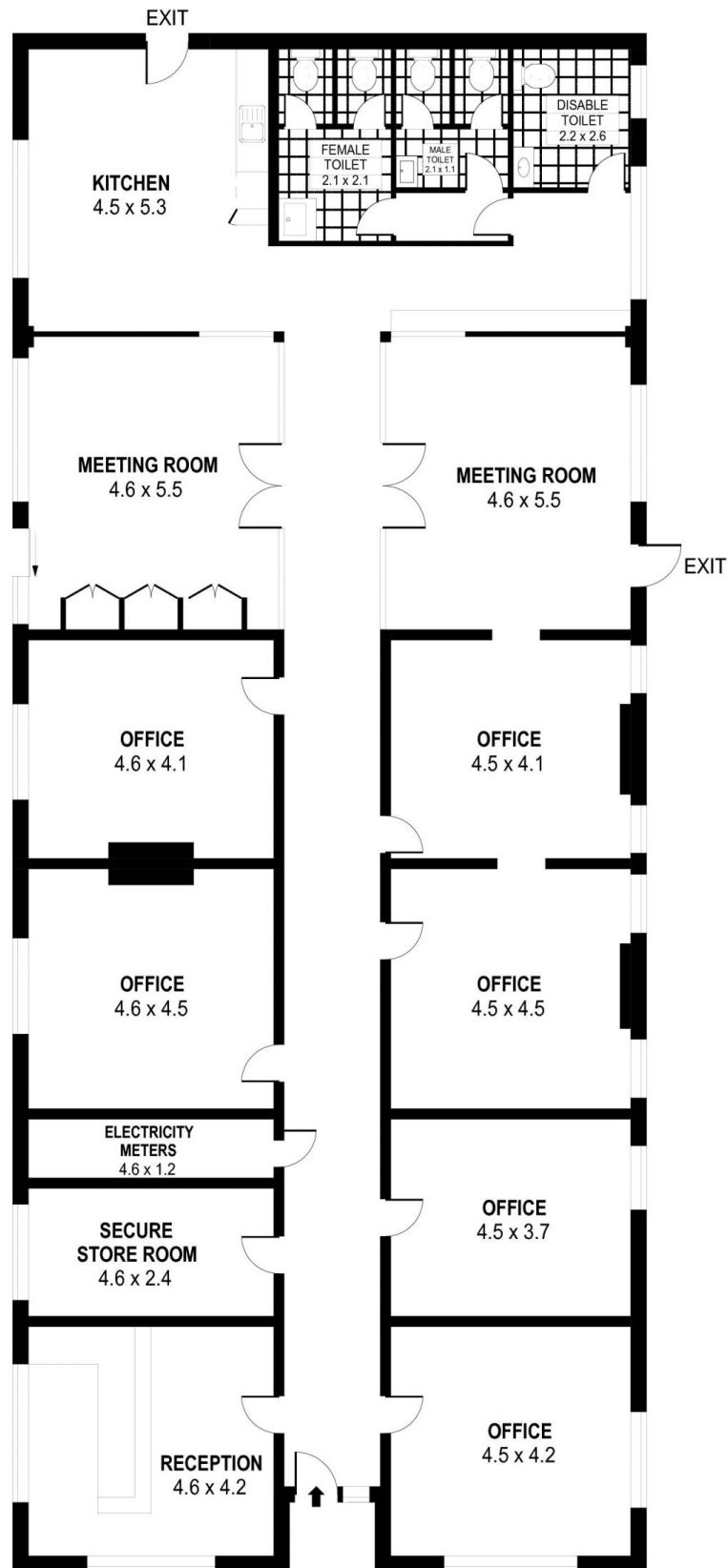
: <https://www.whkcommercial.com.au/lease/nsw/wollongong-illawarra/wollongong-commercial/offices/8121892>



Tony Moschella



Harry Stefanou



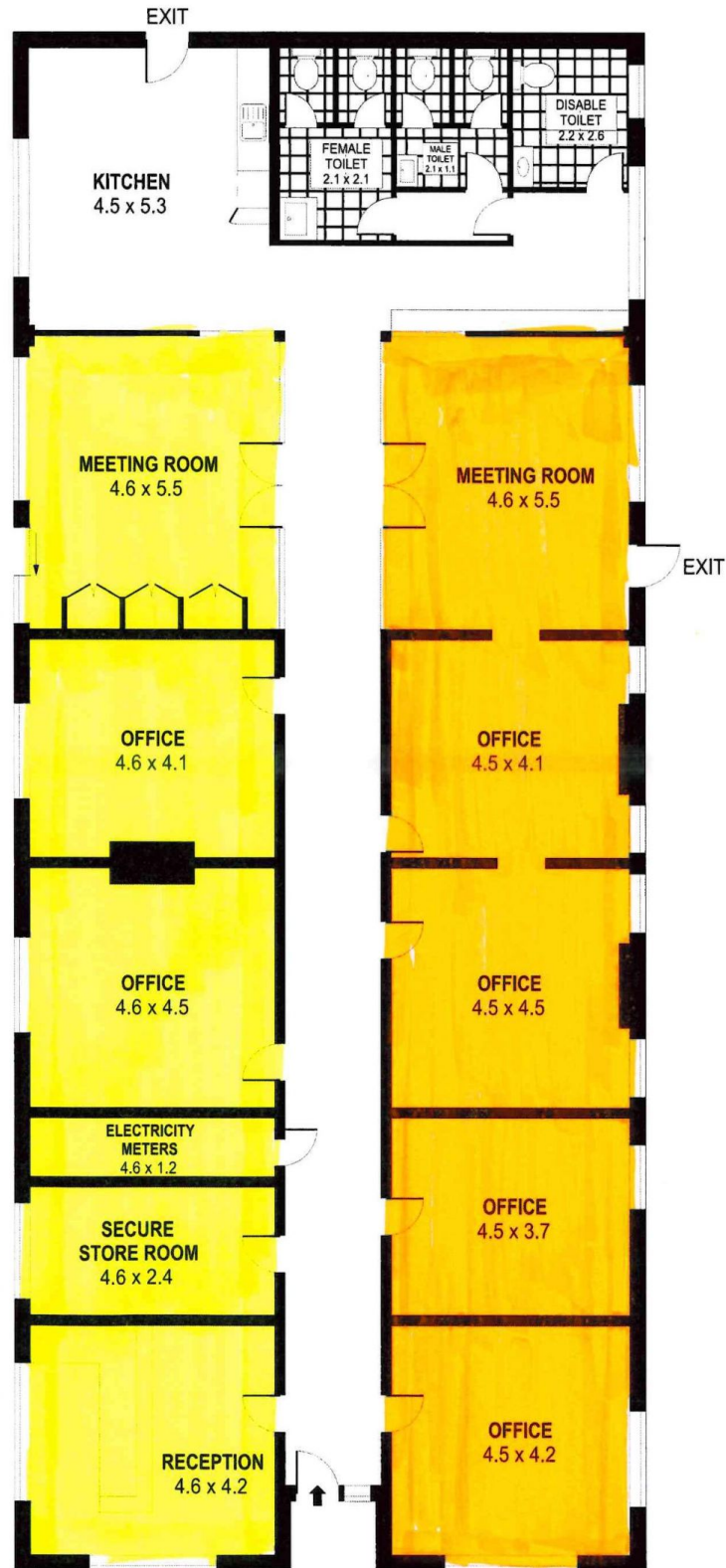
SCALE (METRES)

PLANS SHOWN ONLY INDICATIVE OF LAYOUT. DIMENSIONS ARE APPROXIMATE.
Ref. No: 101534

INT : 317m²

SUITE 1, 41 MARKET STREET

WOLLONGONG



PLANS SHOWN ONLY INDICATIVE OF LAYOUT. DIMENSIONS ARE APPROXIMATE.
Ref. No: 101534

INT : 317m²

SUITE 1, 41 MARKET STREET

WOLLONGONG