



19/10-12 Sylvester Avenue Unanderra NSW

2 

- * 116 sqm warehouse with 49 sqm enclosed office
- * Additional loft/storage space above enclosed office
- * High clearance roller door with 2 undercover cars spaces
- * Two street access including private road out to Princes Highway
- * Secure gated complex with 24 hour remote access
- * Zoned E4 - General Industrial - would suit multiple uses
- * Located in Unanderra Industrial hub close to on/off ramps

[For full version visit the website](https://www.whkcommercial.com.au)

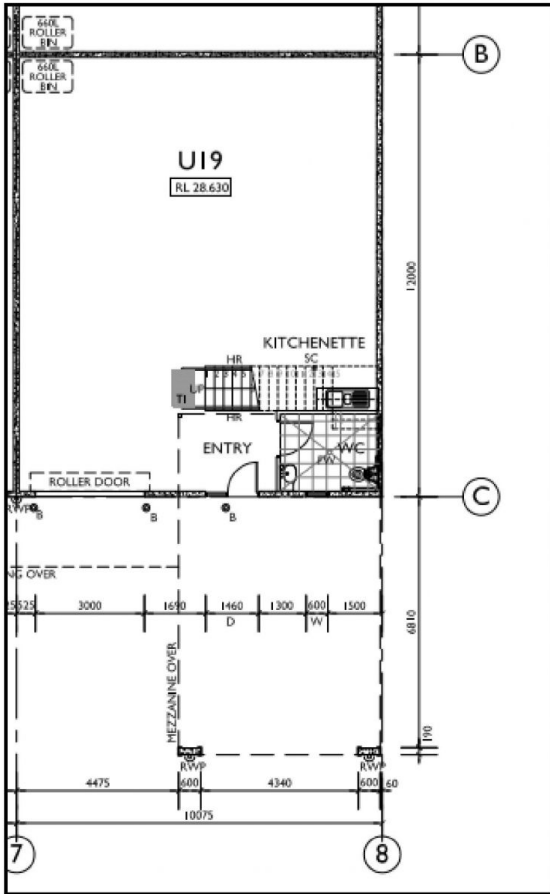
Type : Industrial
Price : \$40,000 + GST + OG pa
Building Size : 165 sqm
View : <https://www.whkcommercial.com.au/lease/nsw/wollongong-illawarra/unanderra/commercial/industrial/8179271>



Harry Stefanou
02 4229 6640



Elena Koroleva
02 4229 6640



Not To Scale

